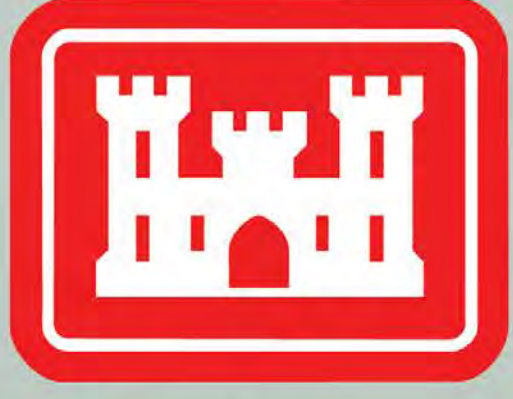


# Engineering With Nature Geographic Project Mapping Tool (EWN ProMap)

E. Michelle Bourne, Cynthia J. Banks, Todd S. Bridges, Ph.D., and Burton C. Suedel, Ph.D.  
 Point of Contact: [Michelle.Bourne@usace.army.mil](mailto:Michelle.Bourne@usace.army.mil); 601-634-3836



US Army Corps of Engineers®  
 BUILDING STRONG®

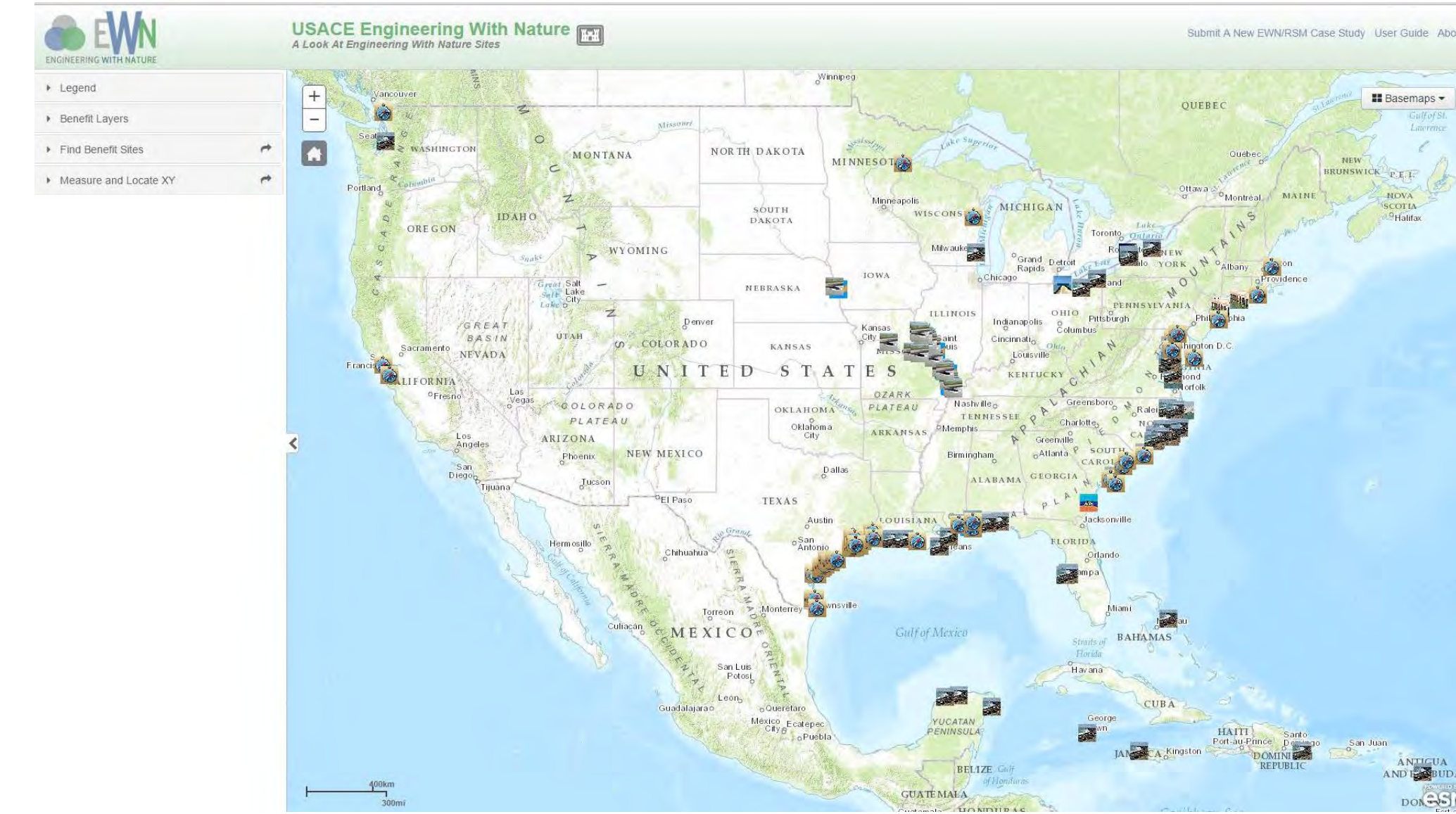


The Engineering With Nature Project Mapper (EWN ProMap) is a geography-based data viewer, or interactive on-line catalog, for projects that fit within the EWN context. The aim of the mapper is to allow users to explore information that can be helpful in developing EWN ideas during the planning of their own projects (see Figure 1). Projects can be viewed based upon infrastructure type (e.g., dredging project, breakwater, lock & dam) or by their intended environmental or social benefits (e.g., beach nourishment, habitat creation).

## EWN ProMap Content and Capabilities:

- Over 175 projects; includes PIANC Working with Nature certified projects
- Most projects are in the United States with growing international representation
- Project display ranges from global scale to project scale (Figure 2)
- Projects can be displayed by the associated infrastructure project type (AIPT) or by the intended EWN benefits (EWNB1, EWNB2, EWNB3) (Table 1)
- Various basemaps are available (e.g., topography, satellite, etc.) (Figure 2)
- Pop-up boxes provide project details, related project web links, and project pictures where available (Figure 3)
- Filter projects by using project name or keywords (Figure 4)
- Determine project longitude and latitude measurements (Figure 5)
- Determine project area (square miles) or distance (miles) between multiple projects (Figure 6)
- Users can submit new case studies for approval to be included in the database (Figure 7)

Figure 1: EWN ProMap Homepage



Available AIPT Selections	Available EWN Benefit Selections
Breakwater	Aesthetics
Bulkhead	Beach nourishment
Chevron	Bird habitat
Dike	Fish habitat
Groin	Invertebrate habitat
Jetty	Island restoration
Multiple round point	Mammal habitat
Navigation dredging	Recreation
Pier/wharf	Reptile habitat
Revetment	Shore protection
Seawall	Vegetated habitat
Shore protection	

Figure 2: Various Project Scale and Basemap Options

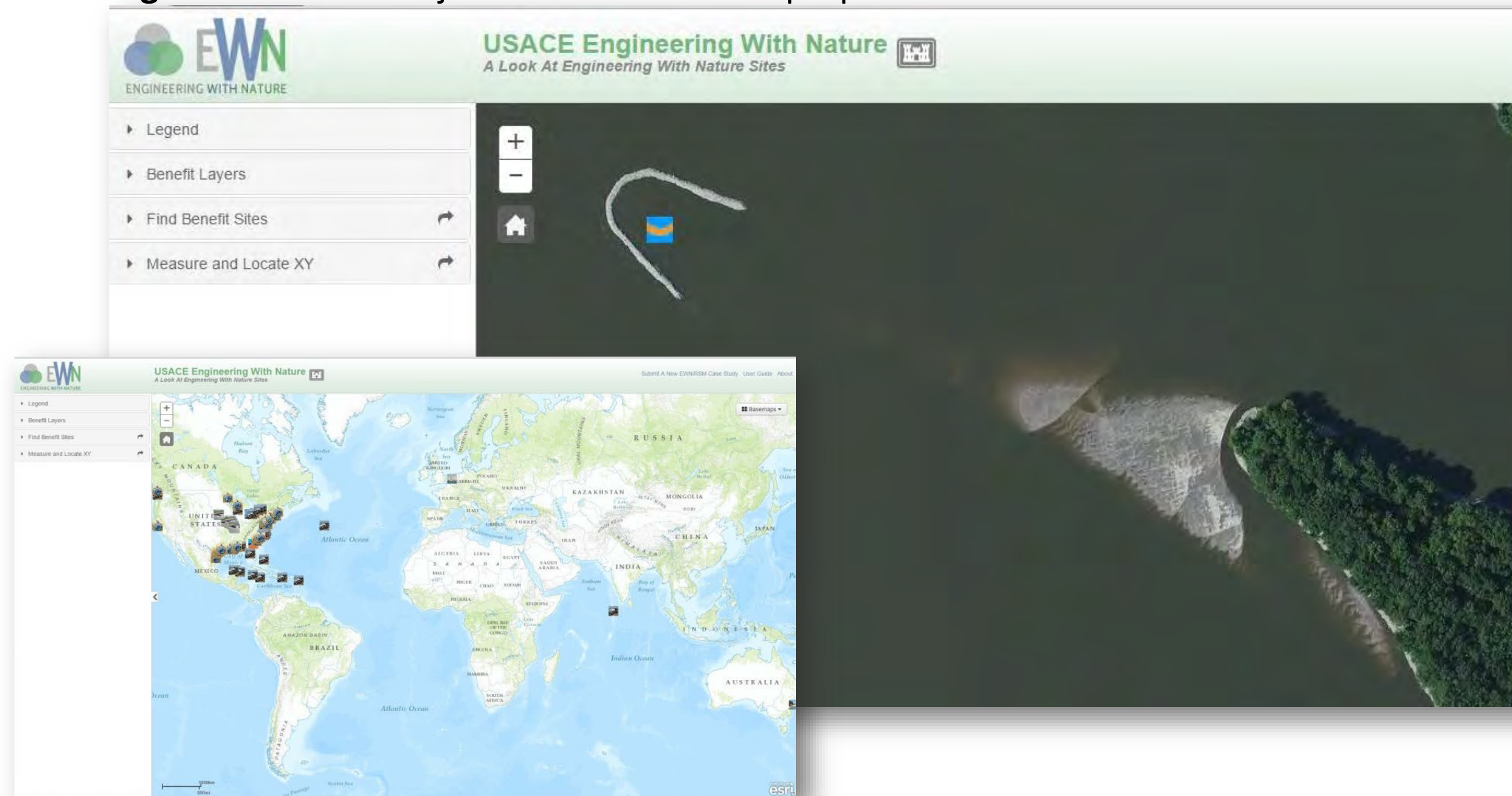


Figure 3: Pop-up with Project Details, Links, and Pictures

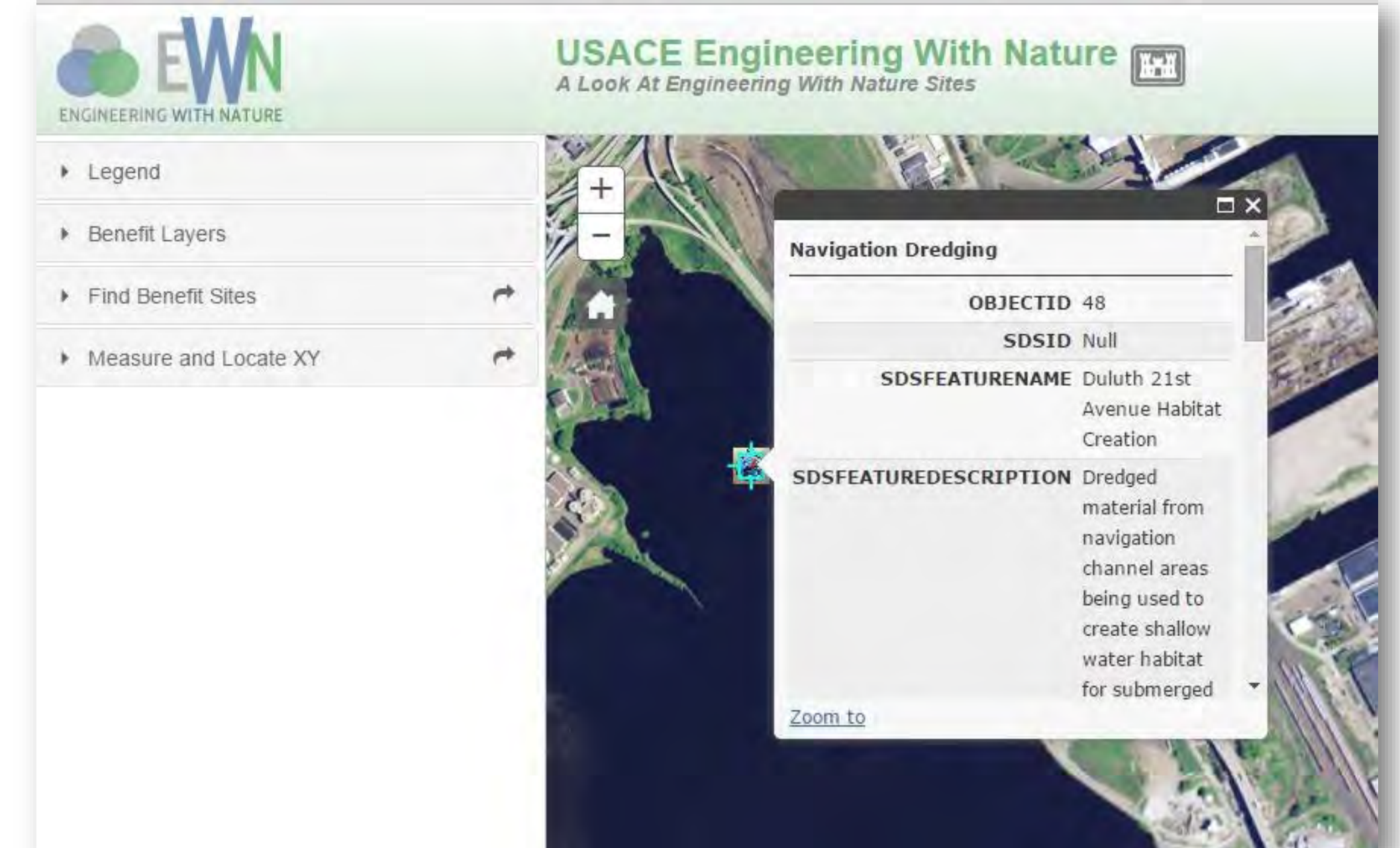


Figure 4: Keyword Search Capabilities

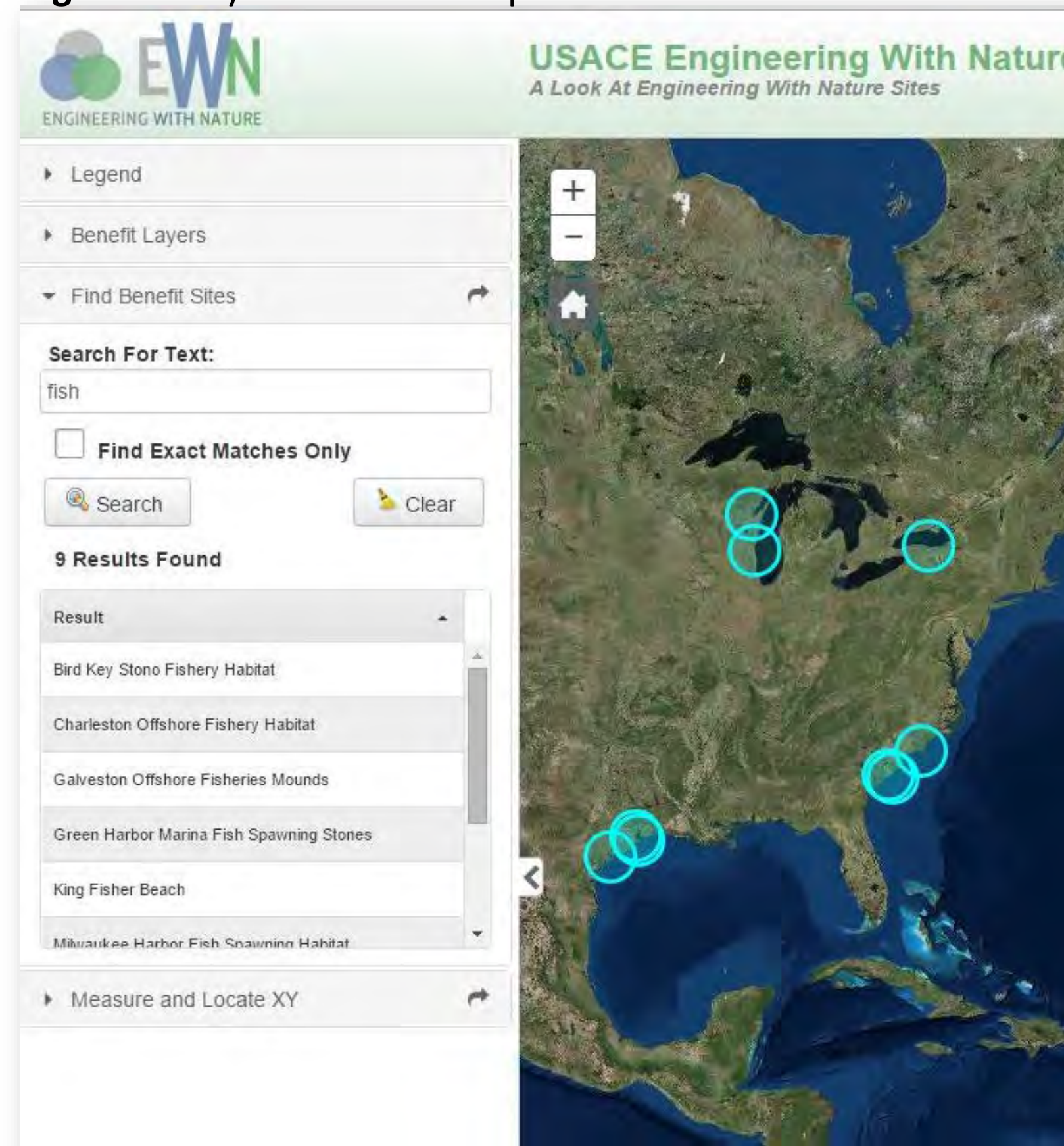


Figure 5: Determining Project Longitude/Latitude

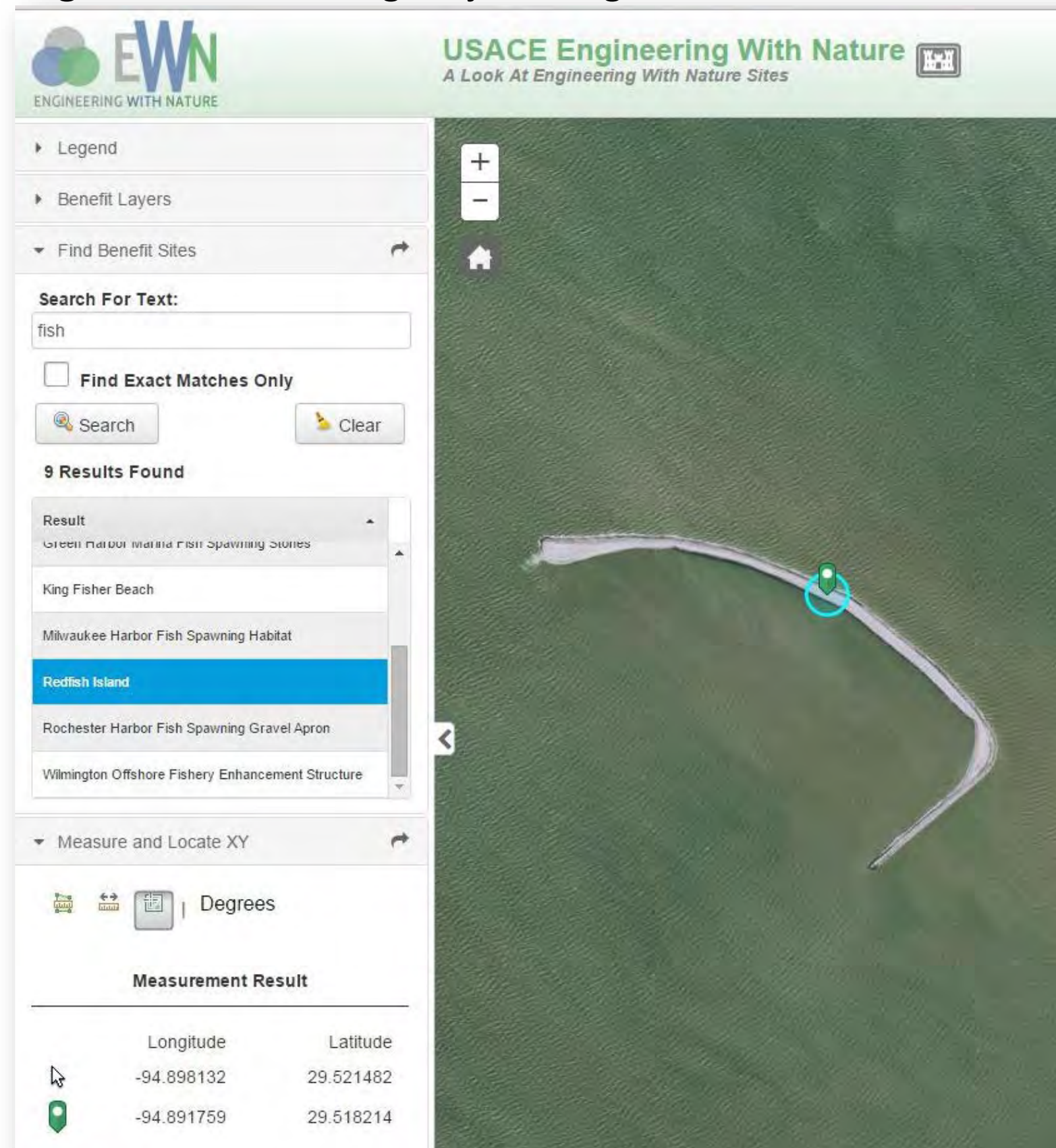
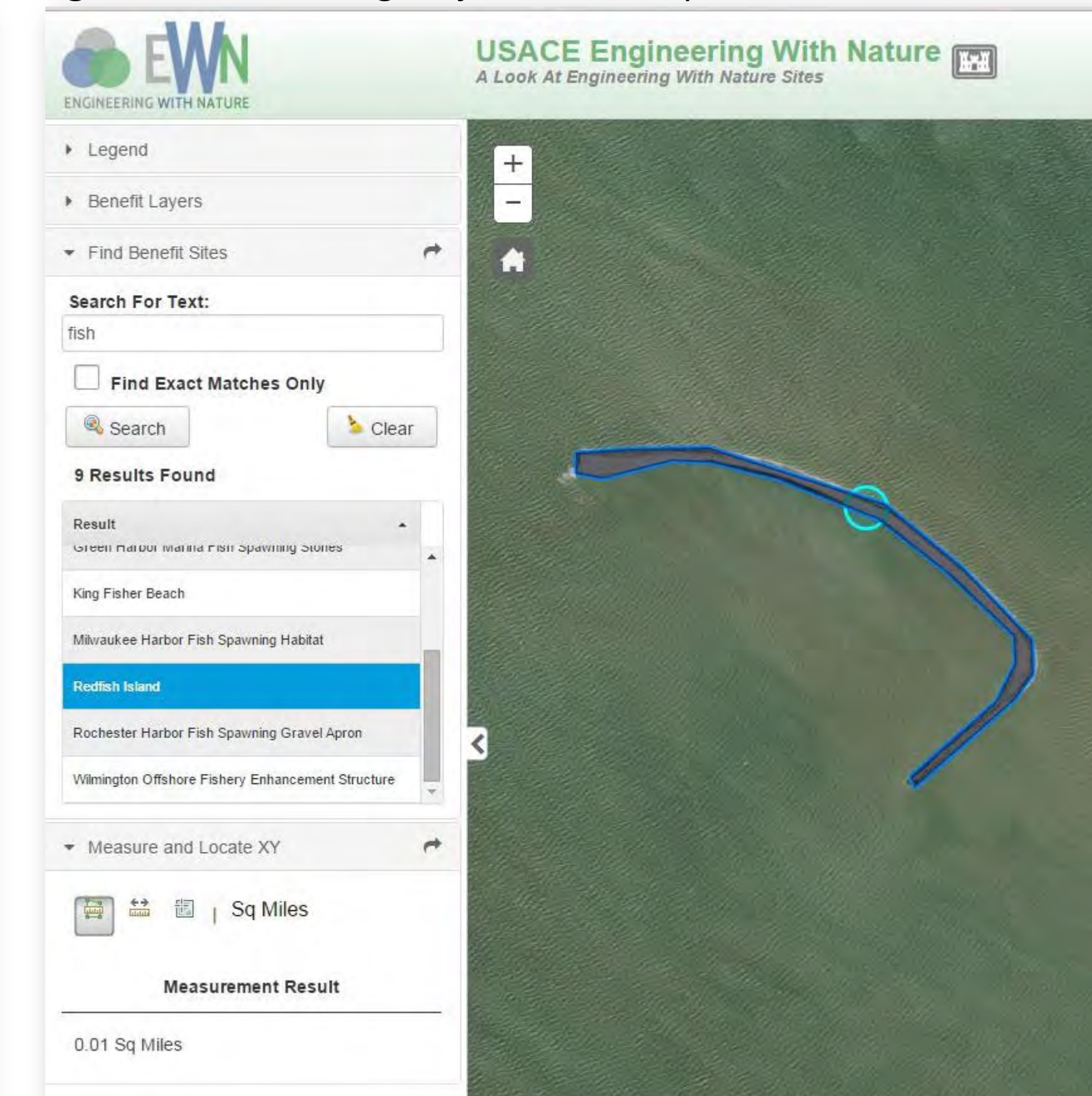


Figure 6: Determining Project Area in Square Miles

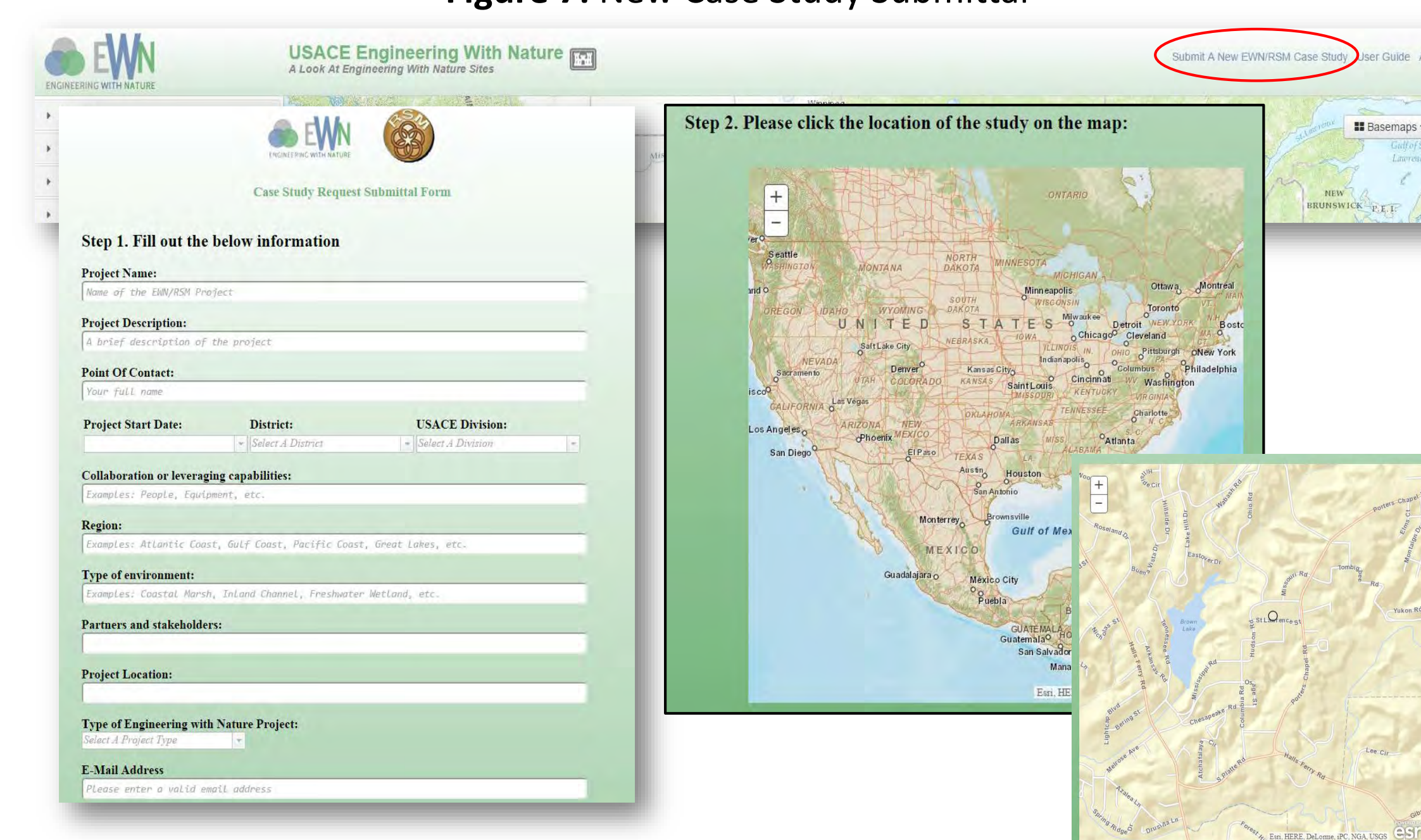


## Do you have a project that you think should be included in our EWN ProMap?

Consider the EWN essential ingredients which have been rephrased as criteria that can be used to describe the degree to which a project applies the EWN concept. These criteria are:

- Extent to which natural processes are used to produce benefits and outcomes.
- Extent to which the project and its configuration broaden the base of benefits provided (economic, social, and environmental).
- Extent to which the project makes use of collaborative processes to organize and focus interests, stakeholders, and partners.
- Extent to which the project produces and makes use of efficiencies to contribute to sustainable delivery of project benefits, including consideration of how the project function is sustainable in the broader systematic context (e.g., regional watershed or sediment systems).

Figure 7: New Case Study Submittal



INNOVATIVE SOLUTIONS  
 for a safer, better world

"Research supported by the US Army Corps of Engineers, Engineer Research and Development Center. The views expressed are those of the authors and do not reflect the official policy or position of the Department of the Army, Department of Defense, or the U.S. Government."

[www.erdc.usace.army.mil](http://www.erdc.usace.army.mil)

<http://155.82.160.6/applications/opj/v013/>