

USACE Green Breakwaters Demonstrate Engineering With Nature through Pilot Projects

Cynthia J. Banks

ERDC-Vicksburg
Environmental Laboratory

31 March 2015

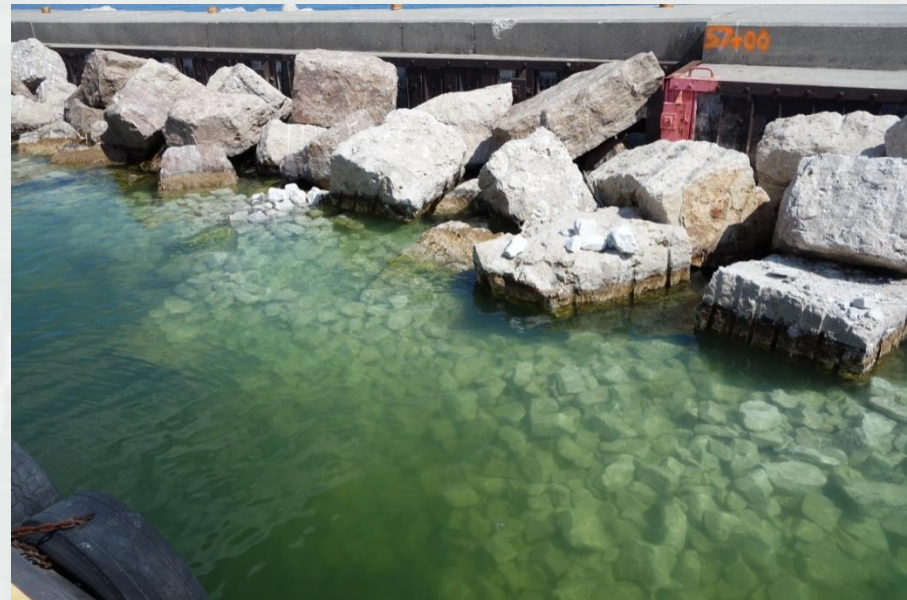


US Army Corps of Engineers
BUILDING STRONG®



Great Lakes Green Breakwaters Study

- Evaluate alternatives for enhancing aquatic ecosystem benefits at existing breakwaters and navigation structures
- During routine repairs and maintenance, as part of modifications, or during comprehensive structural repairs and replacements
- Concept extends to shore protection structures, non-USACE structures



Presentation Overview

- Cleveland & Ashtabula, OH Breakwater Invertebrate/Fish Habitat
- Ashtabula, OH Tern Nesting Habitat
- Milwaukee, WI Fish Spawning Habitat



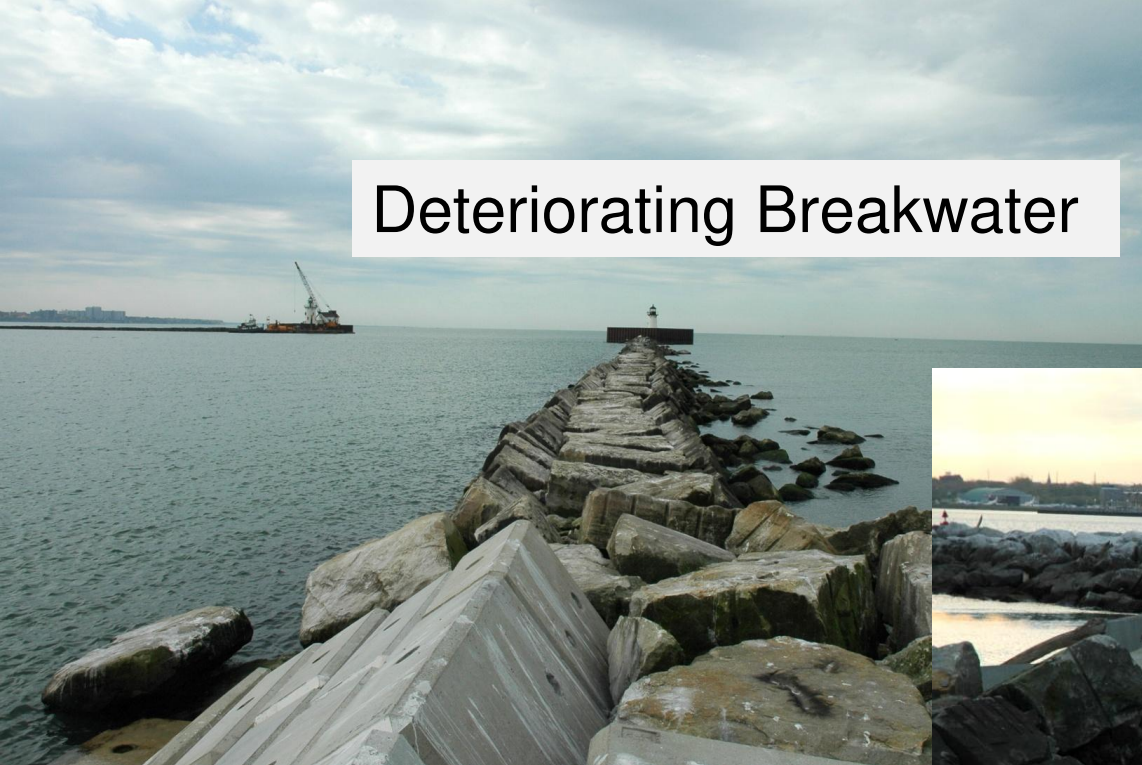
BUILDING STRONG®

Cleveland East Arrowhead Breakwater Project

- Beyond indirect and unplanned habitat creation
- Modify design of featureless concrete toe blocks used for breakwater maintenance
- Provide features creating habitat opportunities for GL fish and other aquatic life
- Examines creation of habitat surfaces on toe blocks
 - Protected indented shelf
 - Dimpled block surface
 - Grooved block surface



Deteriorating Breakwater



Short Repair Section w/ Block



8' x 5' x 4' Repair Toe Block



BUILDING STRONG®

Are there ways to improve biological value of blocks?





Control



Grooved

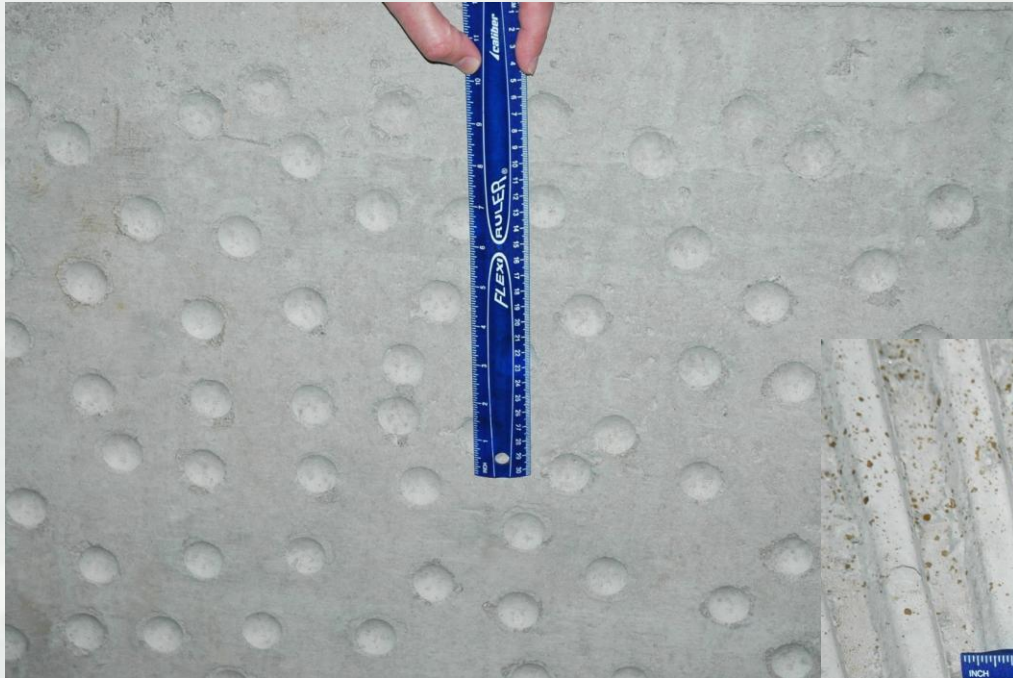


Dimpled

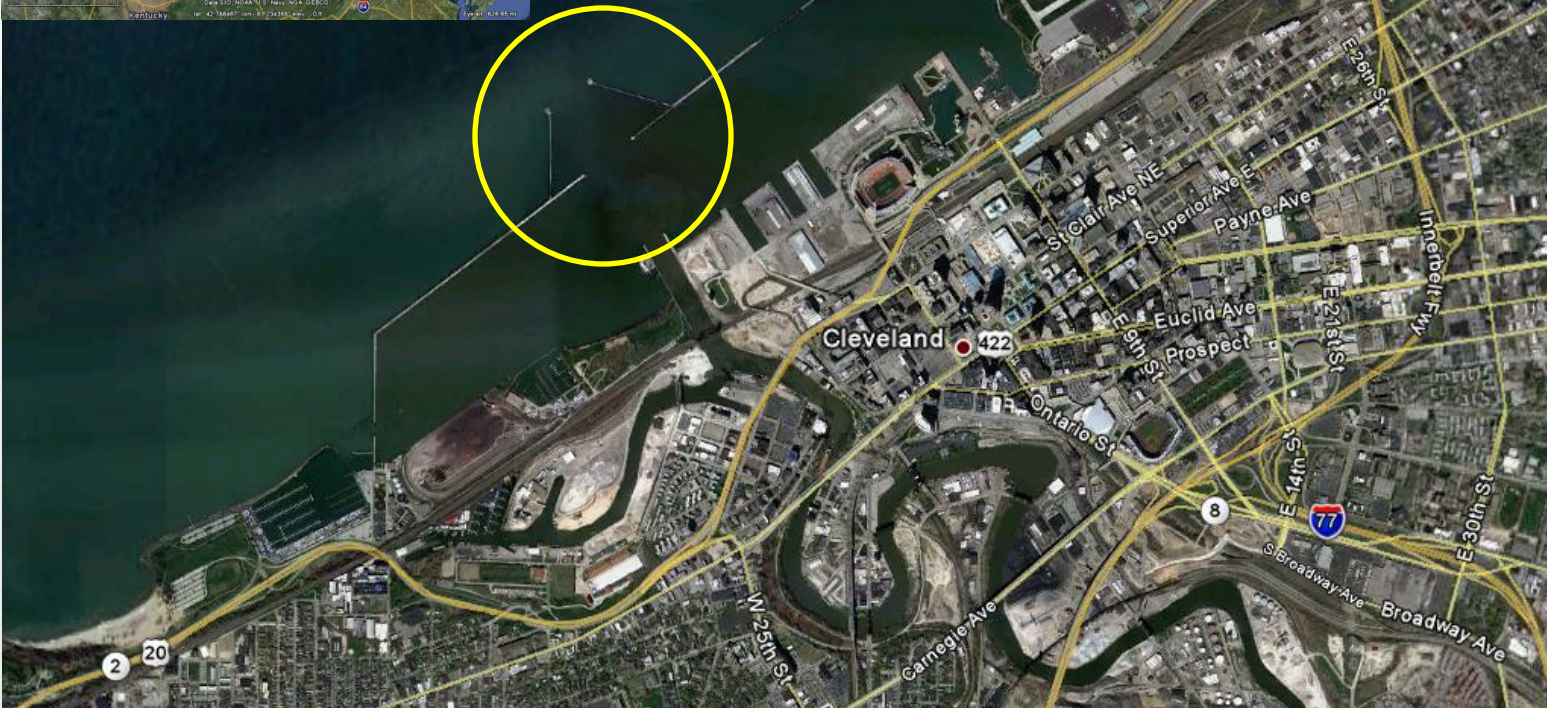
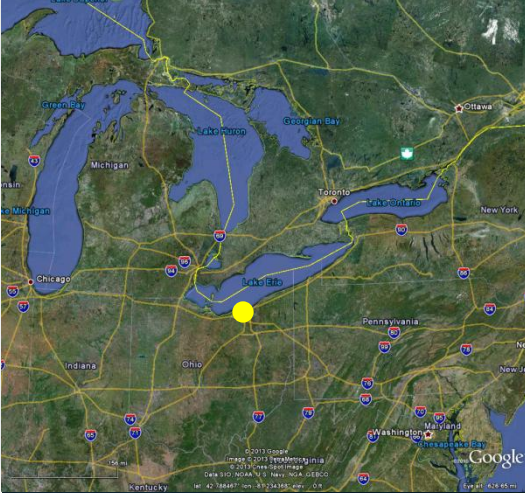


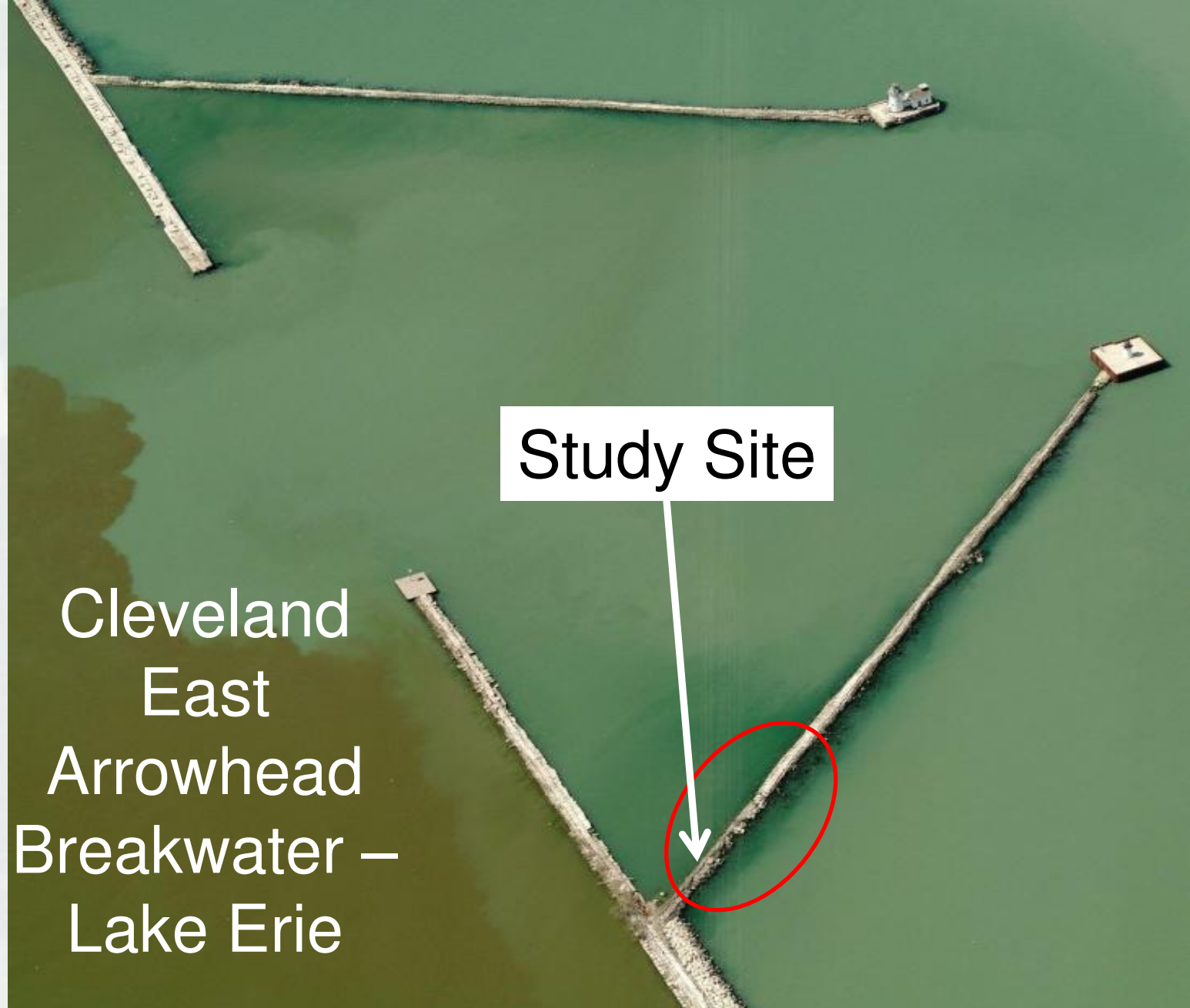
Grooved Shelf

Texture Scale



Cleveland Harbor Study Site





Cleveland
East
Arrowhead
Breakwater –
Lake Erie

Study Site



BUILDING STRONG®

Cleveland Project Schedule

- April/May 2012 – 13 toe blocks installed
- October 2012 – sampling
- April/May 2013 – 3 of the 2012 blocks reset – Hurricane Sandy repairs – no new toe blocks
- June 2013 – sampling
- October 2013 – sampling
- April/May 2014 – remaining 21 blocks set
- 2014/15 - data analysis & reporting



Toe Block Layout



S – Shelf (5)
D – Dimple (2)
C – Control (3)
G – Groove (3)

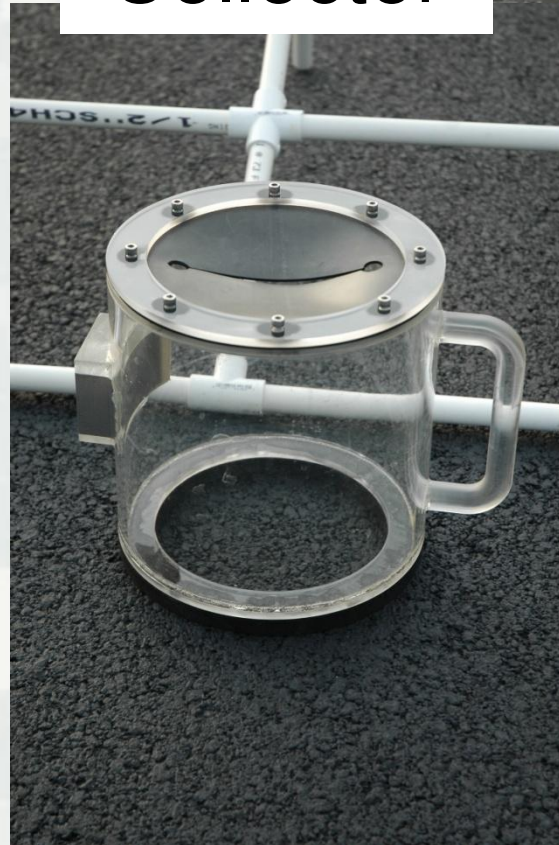
- A total of 34 blocks were set
- 2013 work was delayed due to necessary Hurricane Sandy repairs





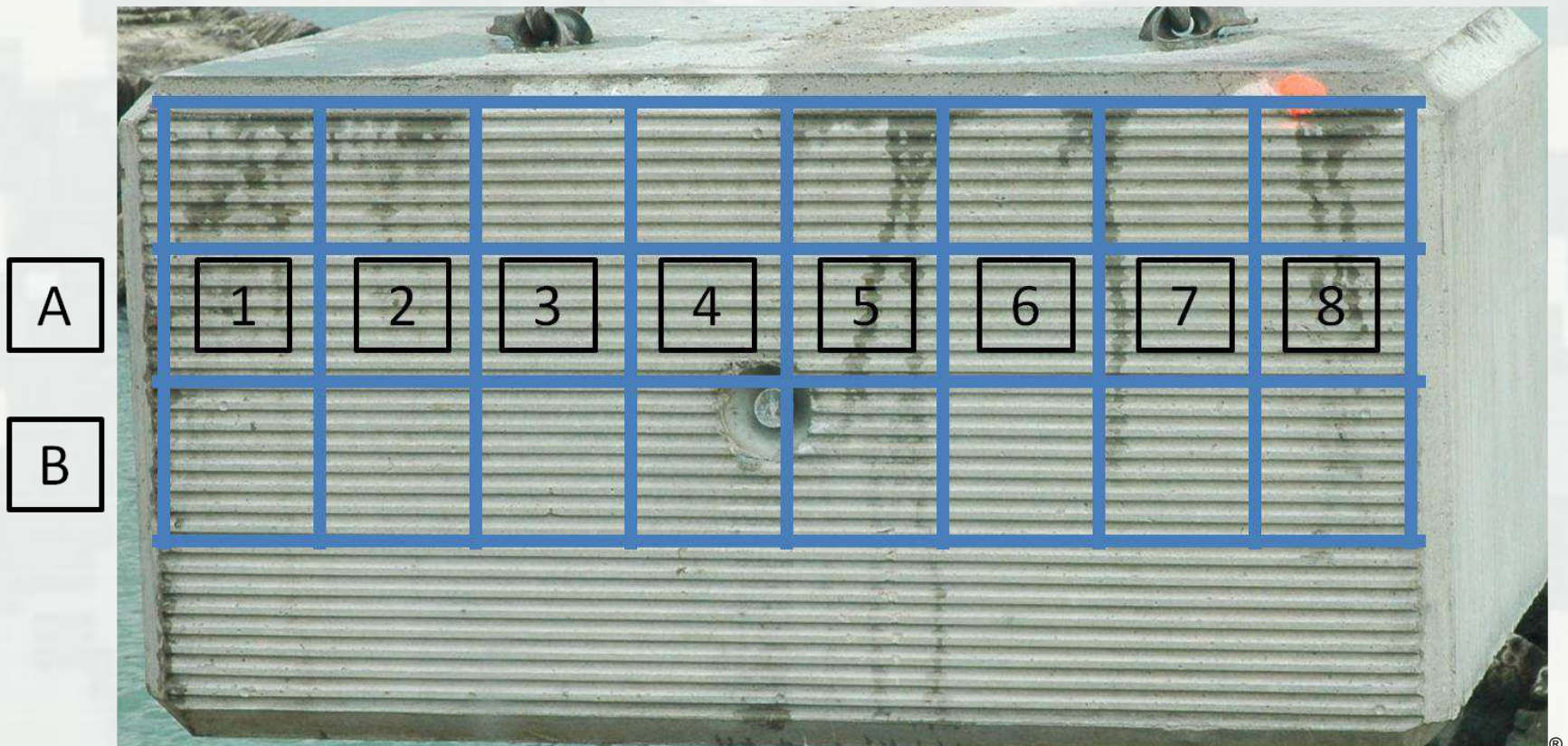
Sampling Grid

Sample Collector



Sampling Grid

- Top row was not submerged





Sample Collection



Post-sampled Area

Representative Samples



Control



Grooved

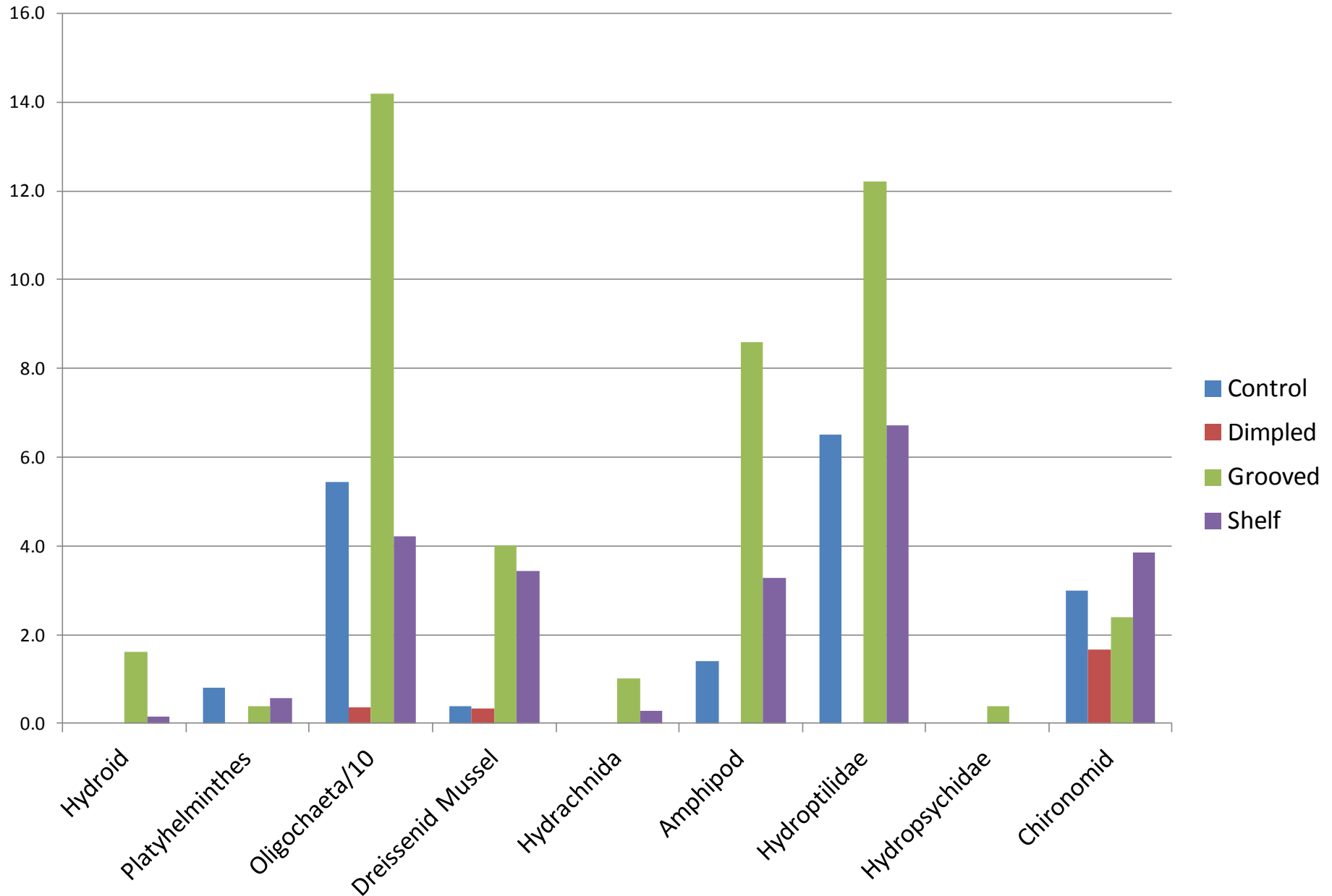


Dimpled



Grooved Shelf

Preliminary Results – Abundance – October 2012



What Have We Learned to Date?

- Initial colonization (Oct. 2012) greater for most groups on grooved blocks
 - Invertebrate secondary production increase
- Potential to provide juvenile fish refuge
- Awaiting sample processing and analysis from other monitoring events





CERTIFICATE OF RECOGNITION

PIANC, the World Association for Waterborne Transport Infrastructure,

hereby grants the company

US ACE

the **"Certificate of Recognition"** for the project

(name) *"Cleveland Arrowhead Breakwater"*

(place/country) *United States*

developed following the **"Working with Nature"** philosophy as approved by the jury.

Brussels, *October 8, 2013* (date)

Louis Van Schel
Secretary-General

Geoffroy Caude
President