

Enhancement of Coastal Habitats thru the Beneficial Use of Dredged Material

Jeff Corbino

Operations Division

USACE - New Orleans District



®

US Army Corps of Engineers

BUILDING STRONG®



OVERVIEW

New Orleans District Navigation Mission

Focus on Mississippi River Bird's Foot Delta

Beneficial Use of Dredged Material

Definition & Basic Components

Common Beneficial Use Types

2013 Maintenance Dredging Summary

Dredged Material Quantity & Placement Type

Area Benefited

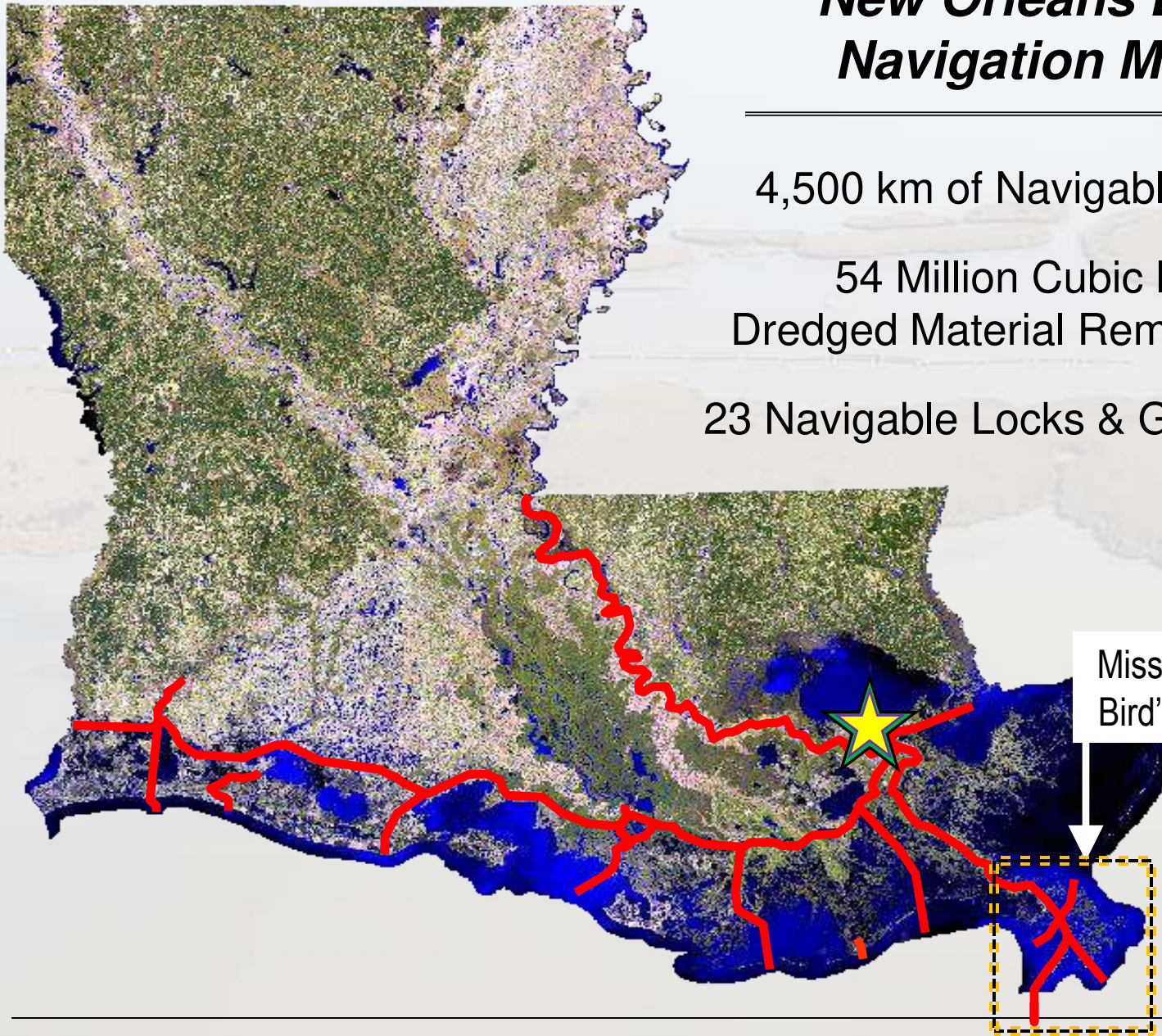


New Orleans District Navigation Mission

4,500 km of Navigable Waterways

54 Million Cubic Meters of
Dredged Material Removed Annually

23 Navigable Locks & Gated Structures

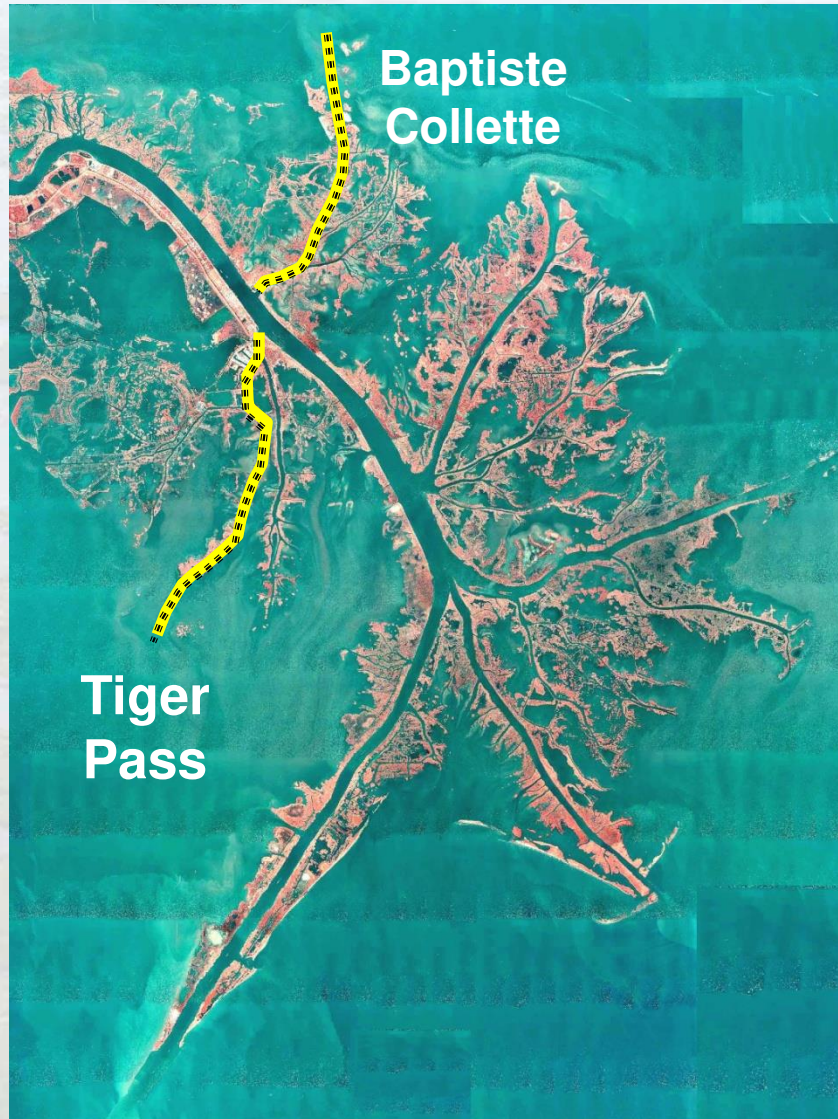


Mississippi River
Bird's Foot Delta



BUILDING STRONG®

Mississippi River – Outlets at Venice (-5 m X 75 m)



Cargo Transported in CY 2011

1.6 Million Tonnes

63% Petroleum Products
25% Equipment & Machinery
5% Water & Ice
5% Waste Material



BUILDING STRONG®

Mississippi River – Southwest Pass (-14 m X 220 m)



Cargo Transported in CY 2011

207 Million Tonnes

36% Petroleum Products

31% Food & Farm Products

12% Coal

8% Chemicals

8% Crude Materials



BUILDING STRONG®



Tiger Pass



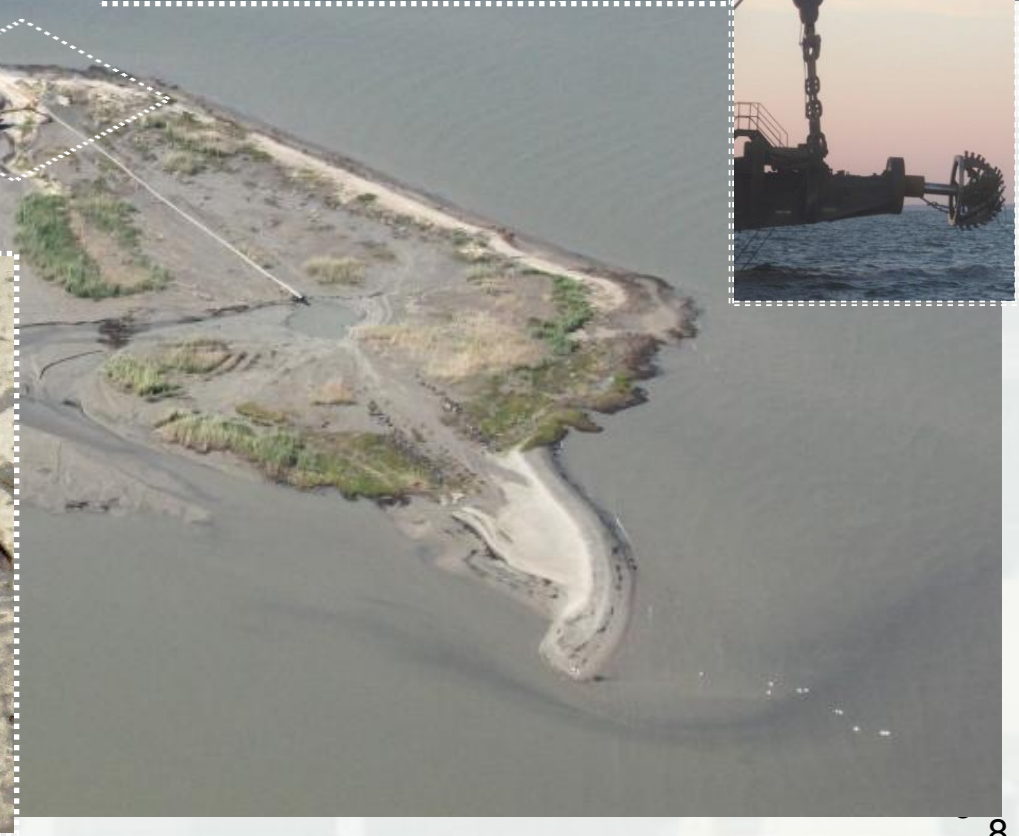
Baptiste Collette



Southwest Pass

Photo by: Patrick M. Gueley
www.gulfcoastairphoto.com
985.788.3458





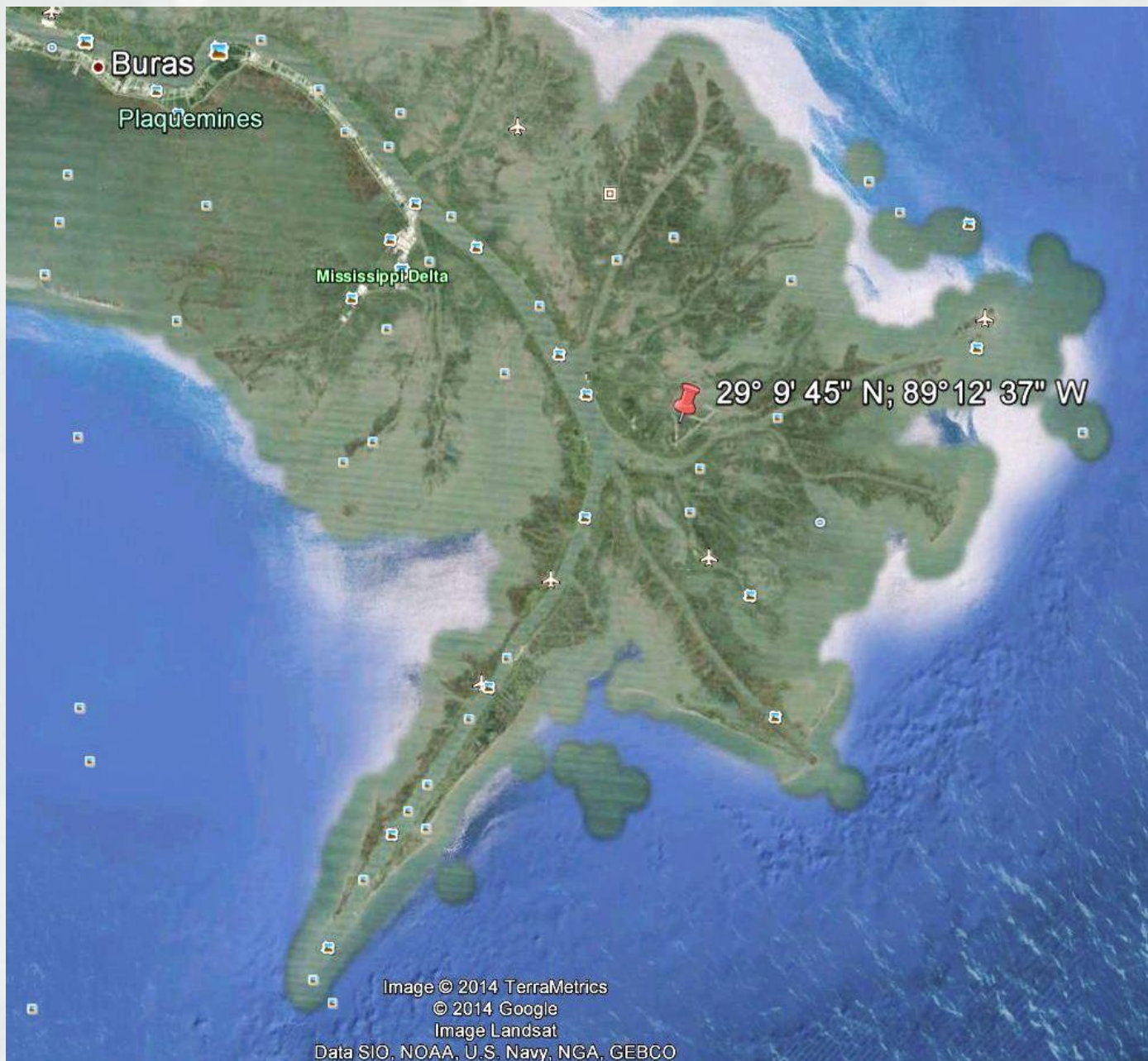


Bankline & Marsh Replenishment



Bankline & Marsh Replenishment





Lat: 29° 9' 45" N; Long: 89° 12' 37" W

BUILDING STRONG®



2012 Imagery of “Woodyard Pond”

BUILDING STRONG®



1998 Aerial Infrared Photography

BUILDING STRONG®



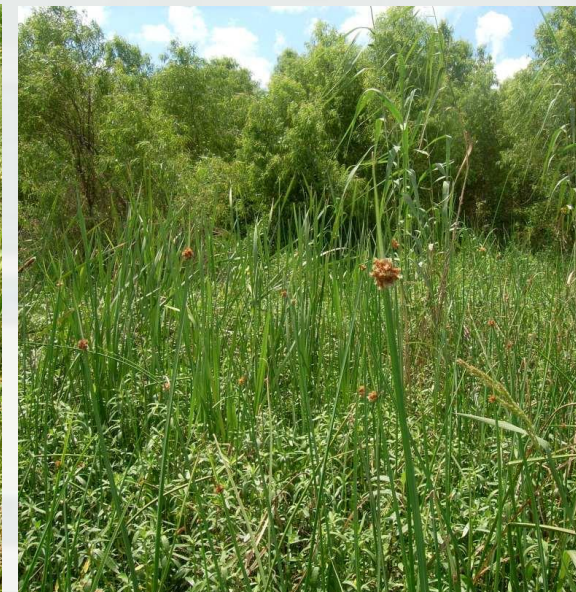
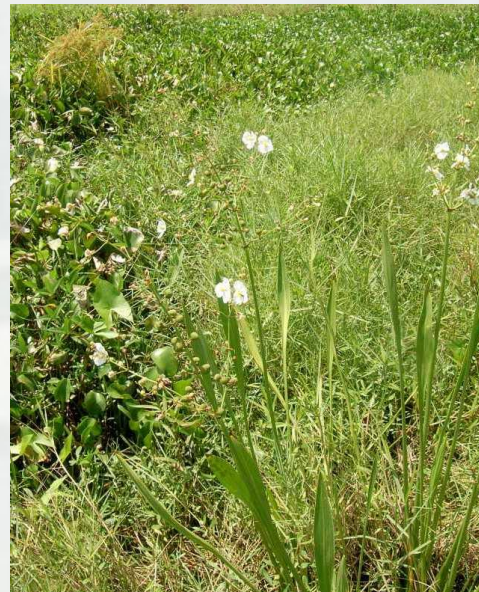
Habitat Development



BUILDING STRONG®

23 Million Cubic Meters
of Dredged Material
Used Beneficially for
Habitat Development

1,050 Hectares of
“Ridge & Swale” Habitat
Established between
1998 & 2013



Habitat Development



BUILDING STRONG®

Maintenance & Dredged Material Placement Summary Mississippi River Bird's Foot Delta (Fiscal Year 2013)

Bird Islands

**900,000 Cubic Meters
17 Hectares**

Bankline & Marsh Replenishment

**5.1 Million Cubic Meters
140 Hectares**

Habitat Development

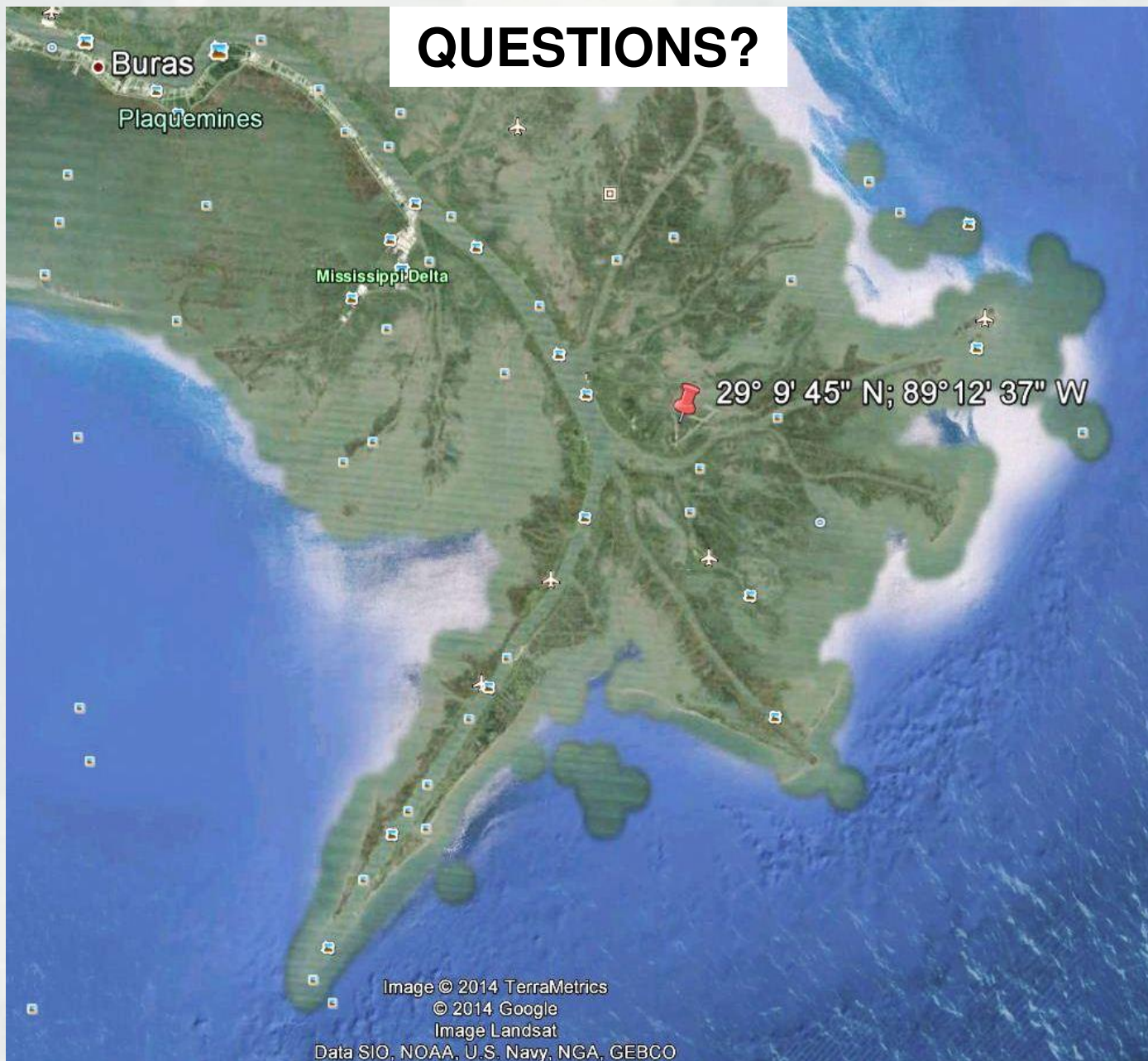
**5.7 Million Cubic Meters
320 Hectares**

Non-Beneficial Open Water Placement

**5.2 Million Cubic Meters (Riverine Placement)
2.6 Million Cubic Meters (Ocean Placement)**



QUESTIONS?



Lat: 29° 9' 45" N; Long: 89° 12' 37" W

BUILDING STRONG®