

# Environmental River Engineering

## *An Overview of “Engineering With Nature” Structures on the Mississippi River*

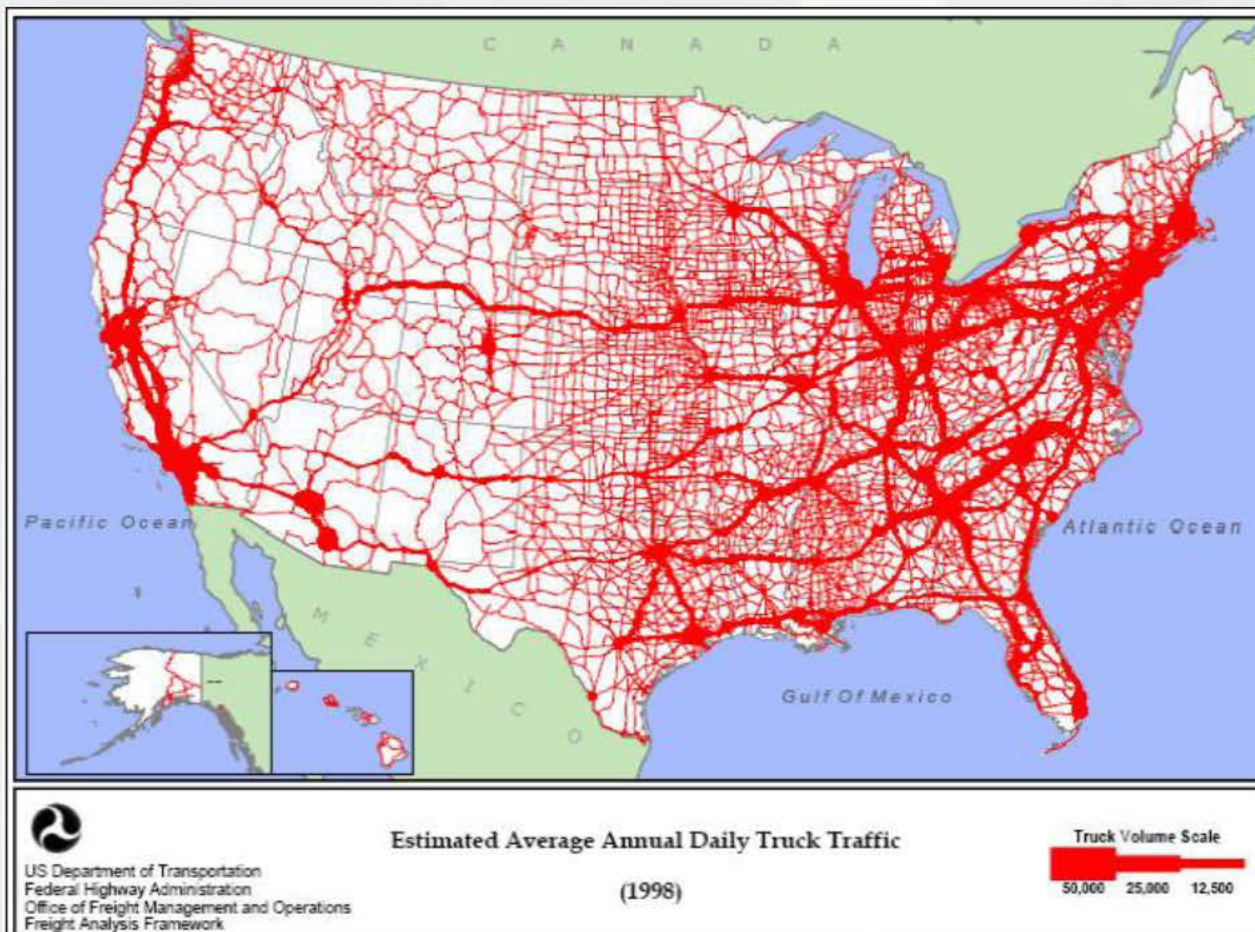


Rob Davinroy, P.E., M. ASCE  
Chief, River Engineering  
Applied River Engineering Center  
St. Louis District





**BUILDING STRONG®**



**BUILDING STRONG®**



**1 tow = 1800 trucks**

**35,000 trucks per day off the  
road in St. Louis region**



---

**BUILDING STRONG®**

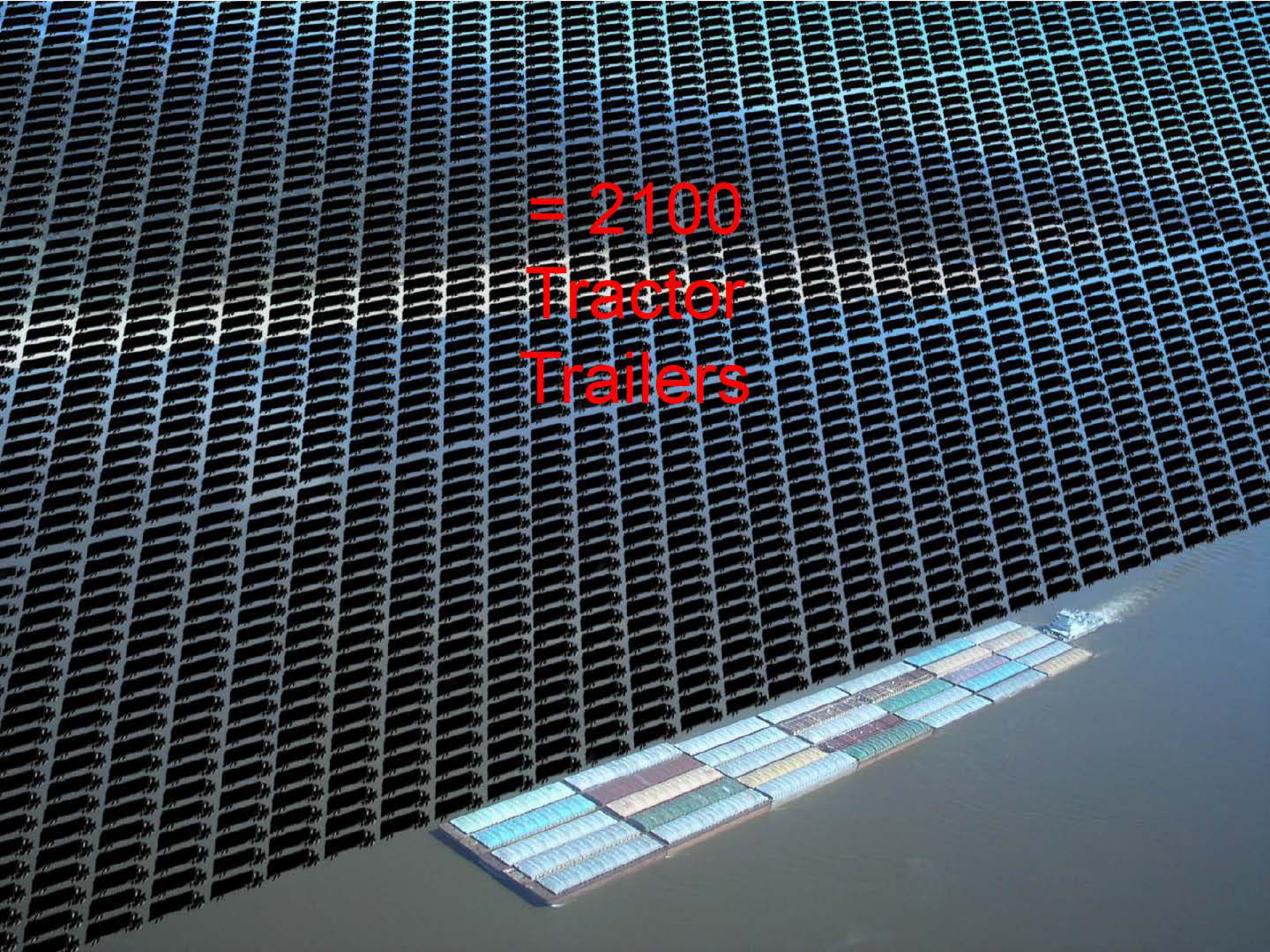
The Inland Waterway System, the most efficient, economic, environmentally efficient mode of transportation on the planet.



---

**BUILDING STRONG®**

= 2100  
Tractor  
Trailers

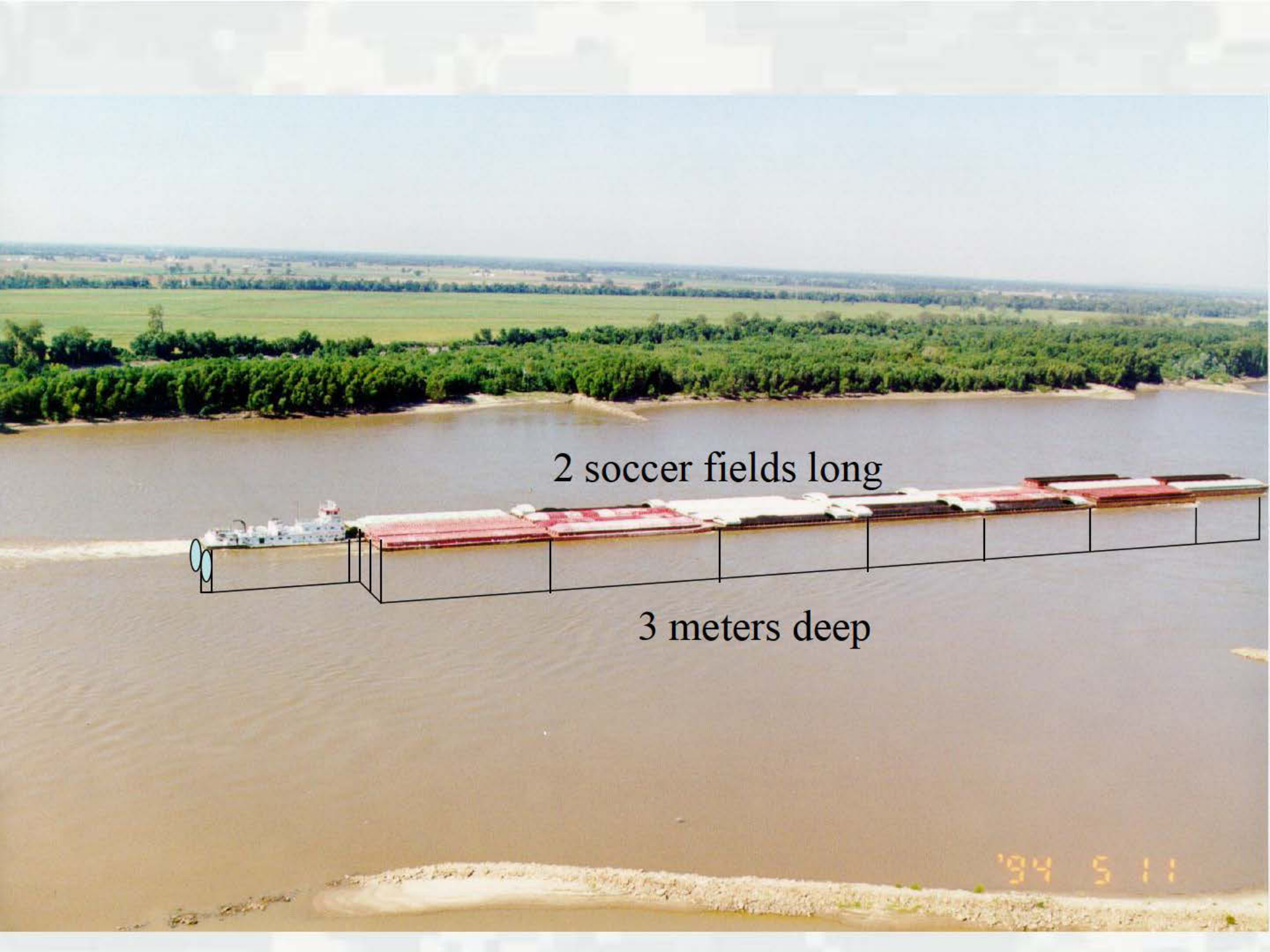


# The Design

Minimum 3 meters deep, 100 meters wide, with additional width in bends as required



**BUILDING STRONG®**



2 soccer fields long

3 meters deep

'94 5 11





Corn

Soybeans

Wheat

Coal

Salt

Wood Chips

Gasoline

Petroleum

Jet Fuel

Fuel Oil

Petroleum

Asphalt

Veg Oils

Kerosene

Benzene

Alcohol

Liquefied Gases

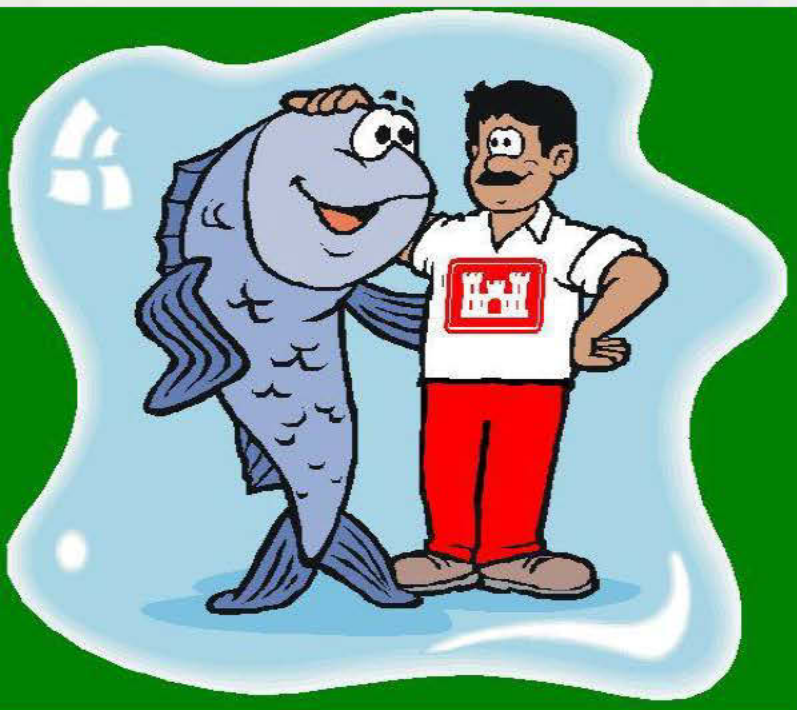
Sodium Hydroxide

Soybean Oil

Bev Alcohol



**BUILDING STRONG®**



**Goal: Obtaining and  
Maintaining a  
Reliable Navigation  
Channel, for the  
efficient transport of  
goods and services,  
in an Environmentally  
Sensitive Manner**



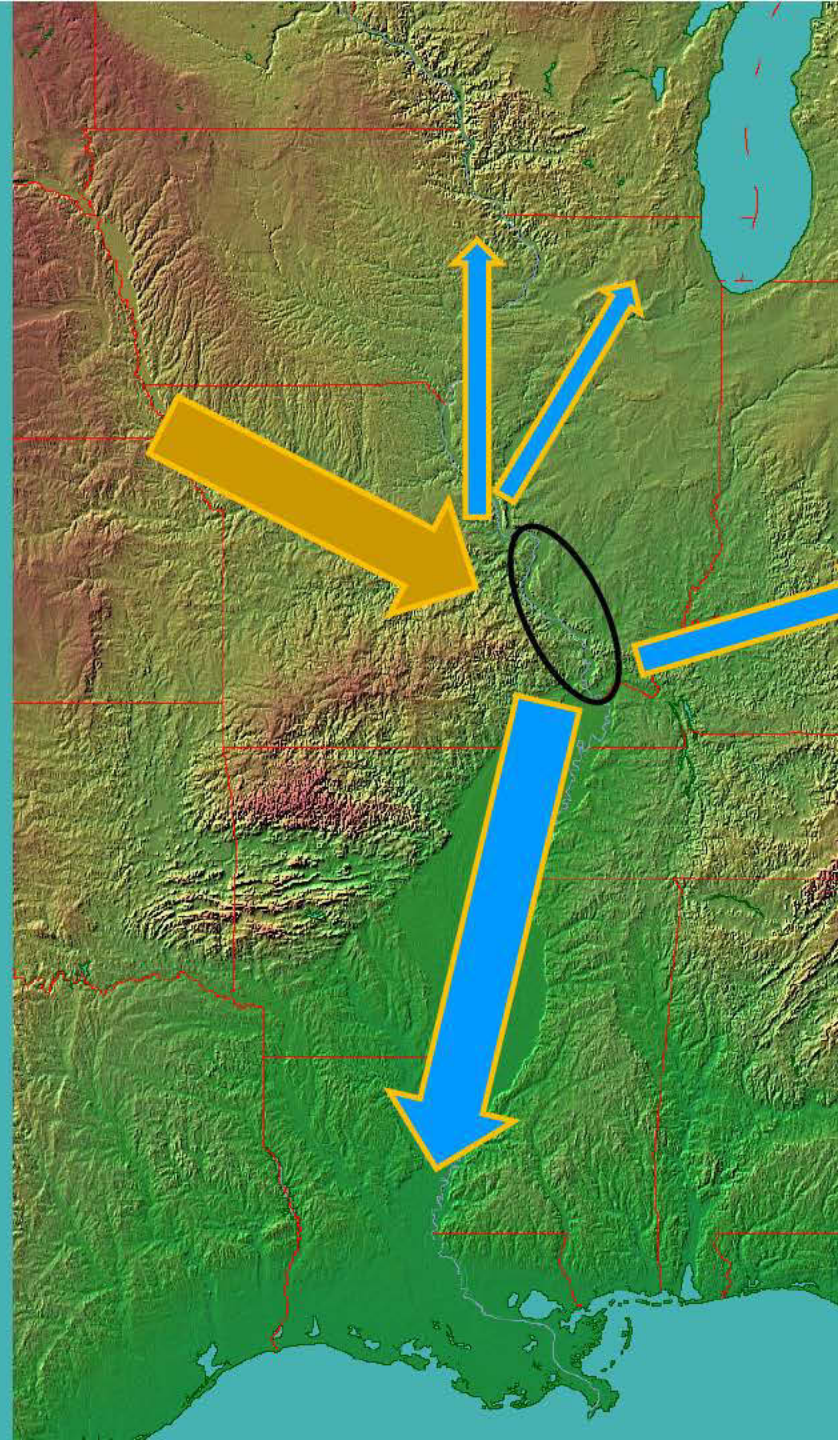
**BUILDING STRONG®**

Latitude (degrees)

40

35

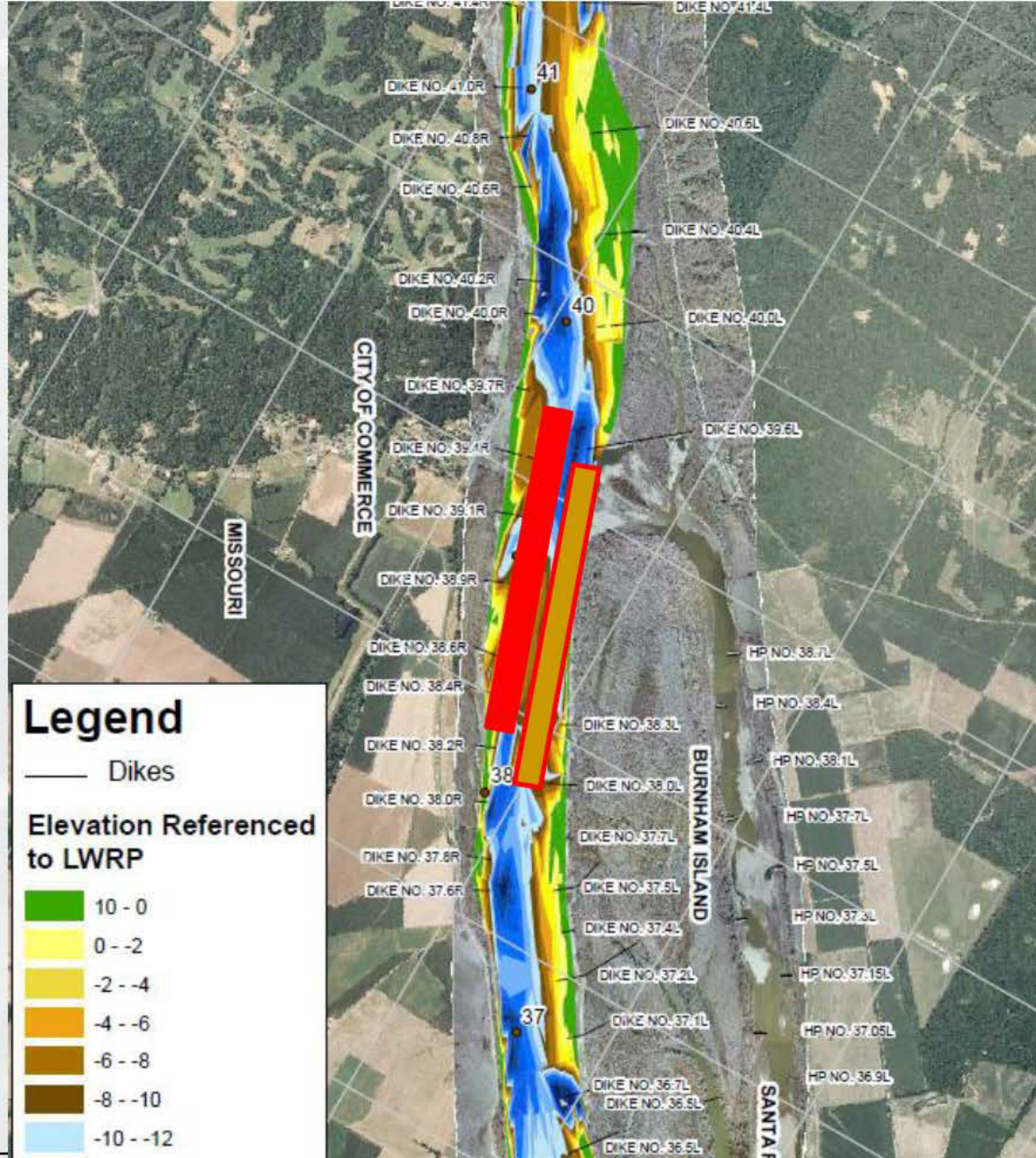
30



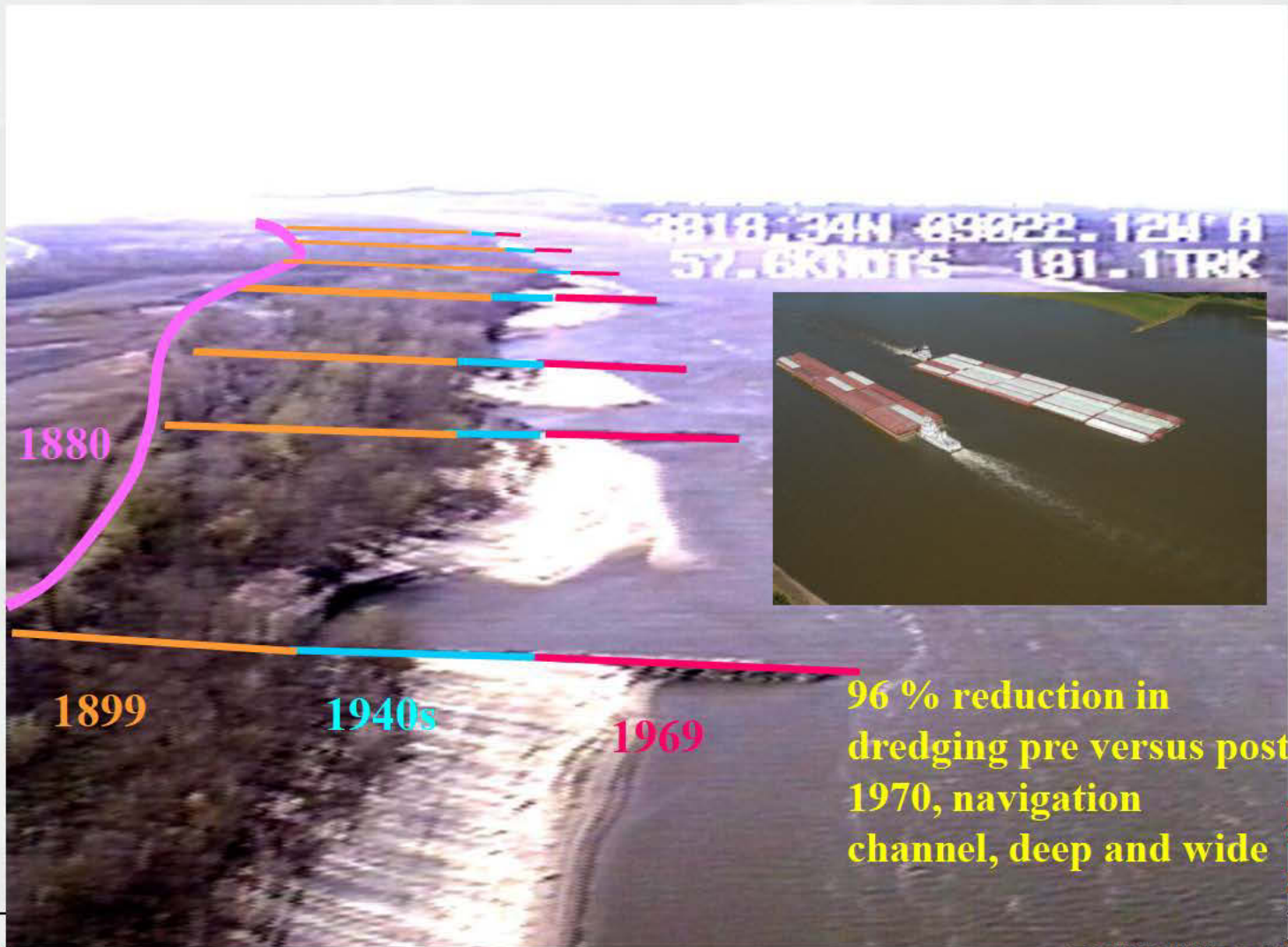
The  
Middle Mississippi River  
1300 training structures



**BUILDING STRONG®**



**BUILDING STRONG®**



**BUILDING STRONG®**

## Traditional, Perpendicular to the Channel, Constriction Sediment Management



## Modern Day, Parallel to the Channel, Sediment Management



**BUILDING STRONG®**

2002 Construction - \$1.5 mil

\$500 k per year





**BUILDING STRONG®**

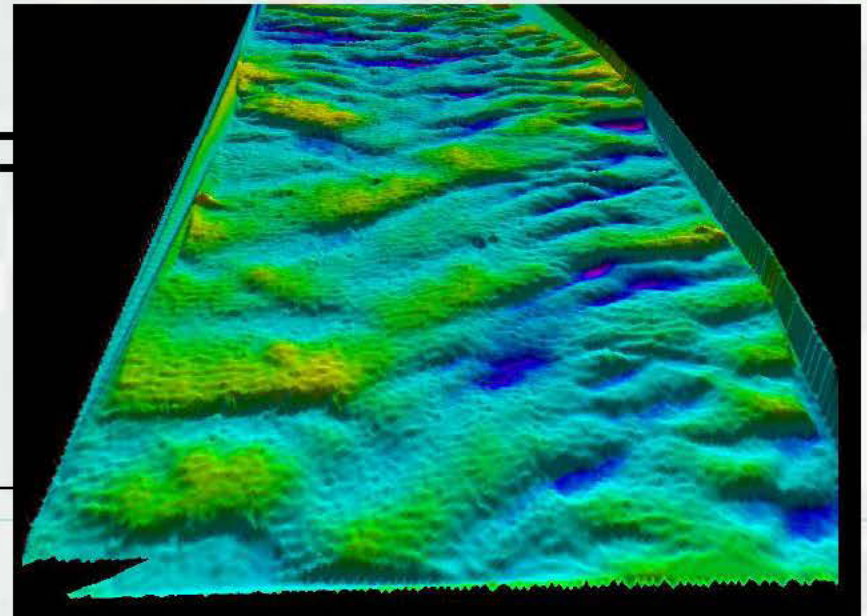
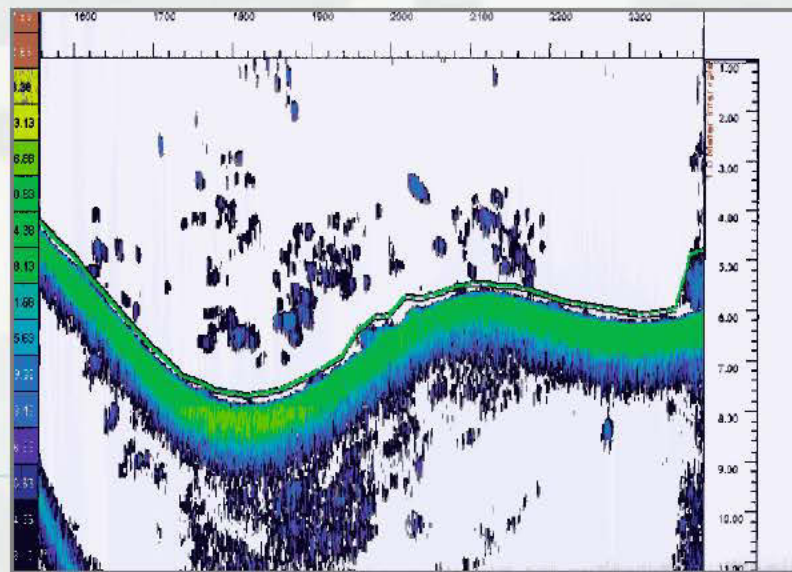
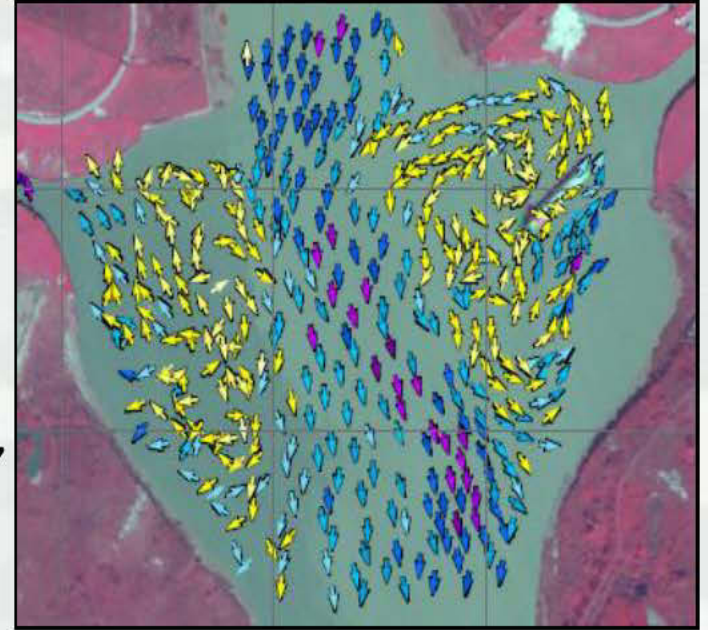


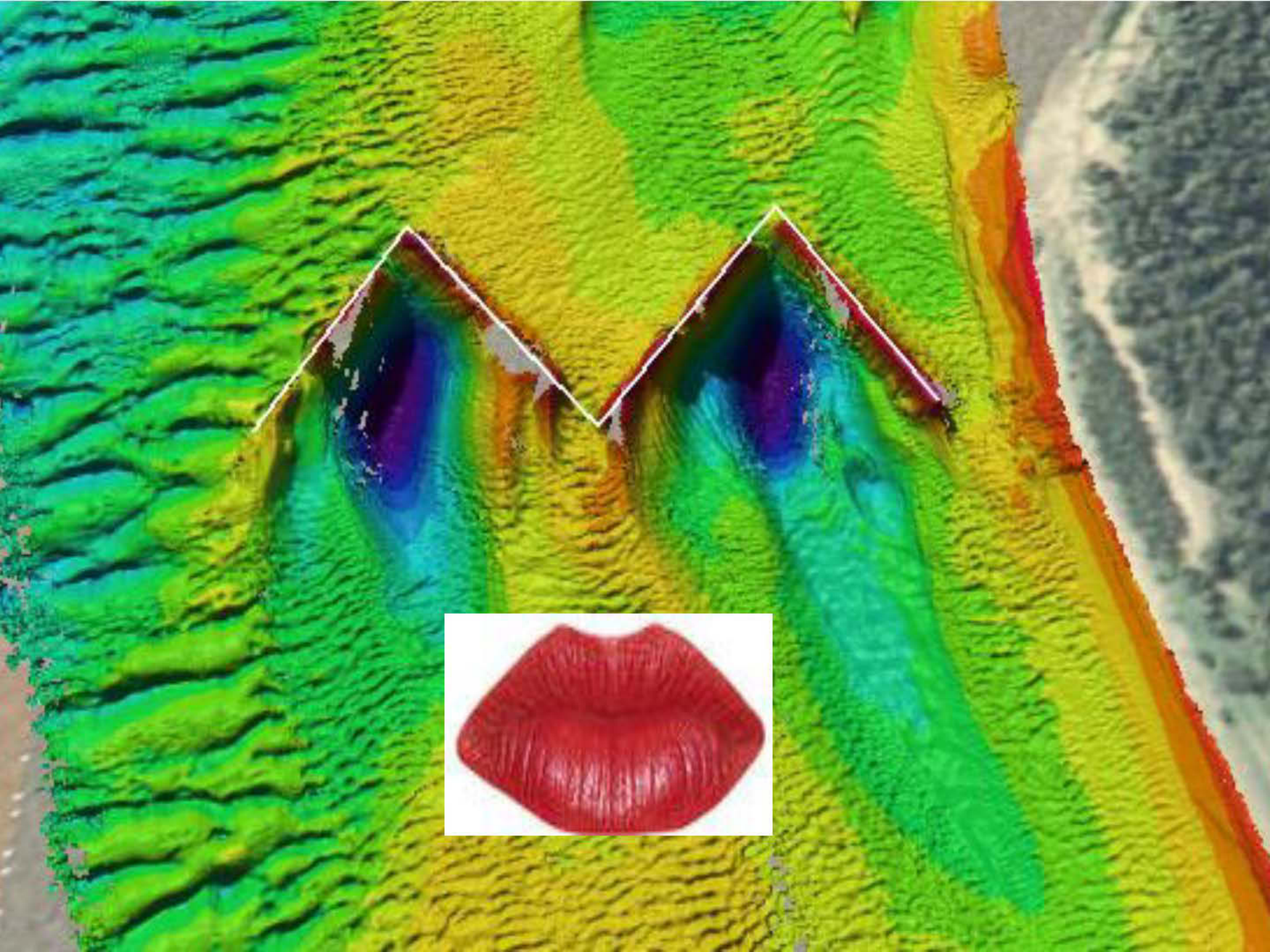
**BUILDING STRONG®**

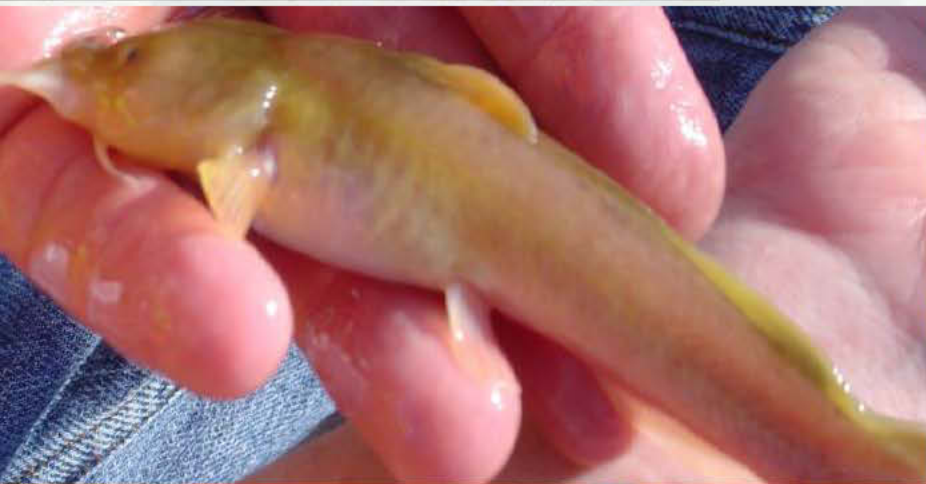




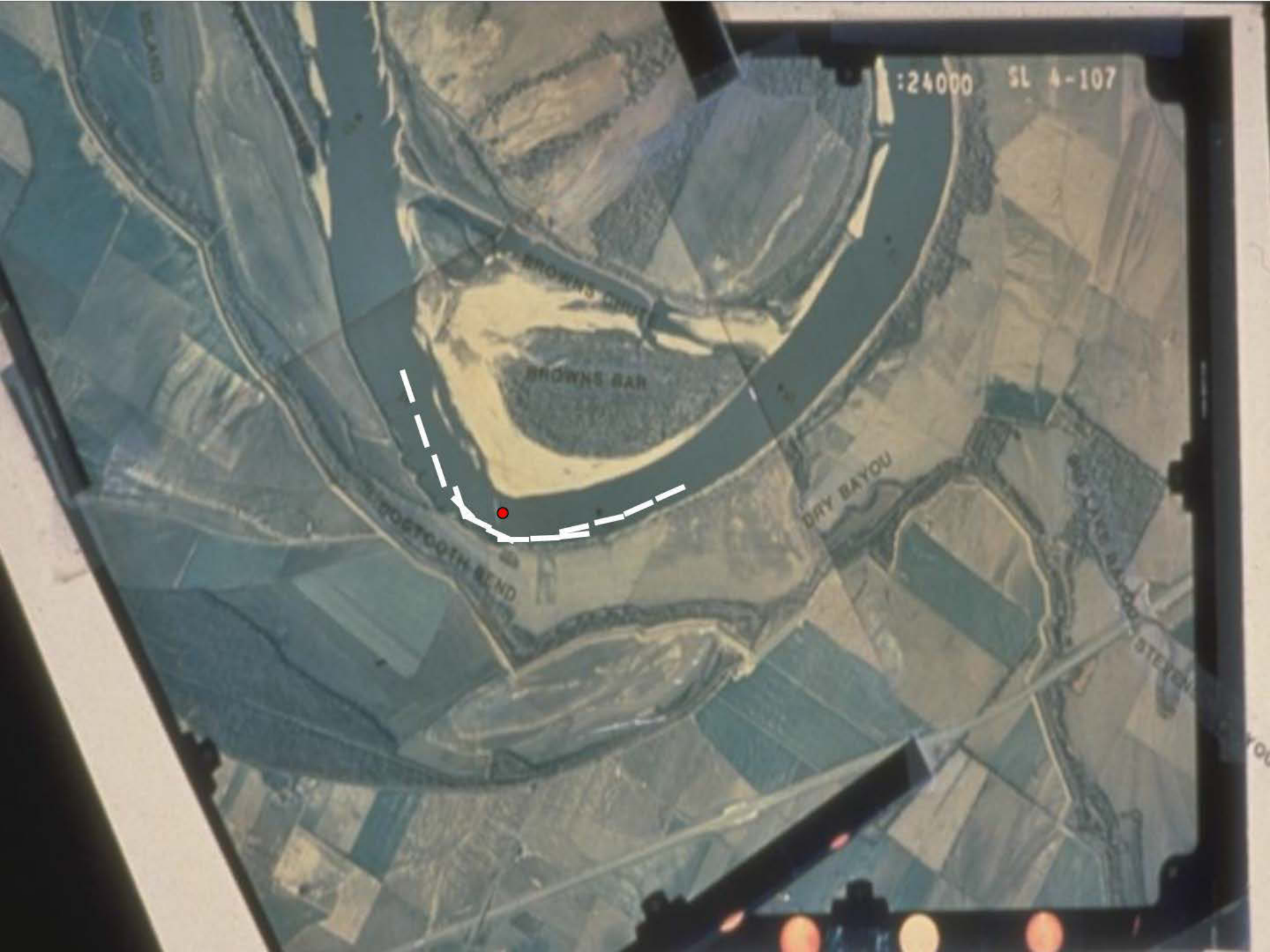
**BUILDING STRONG®**











:24000 SL 4-107

BROWN'S CHUTE

BROWN'S BAR

POSTOOTH BEND

DRY BAYOU

STEVEN



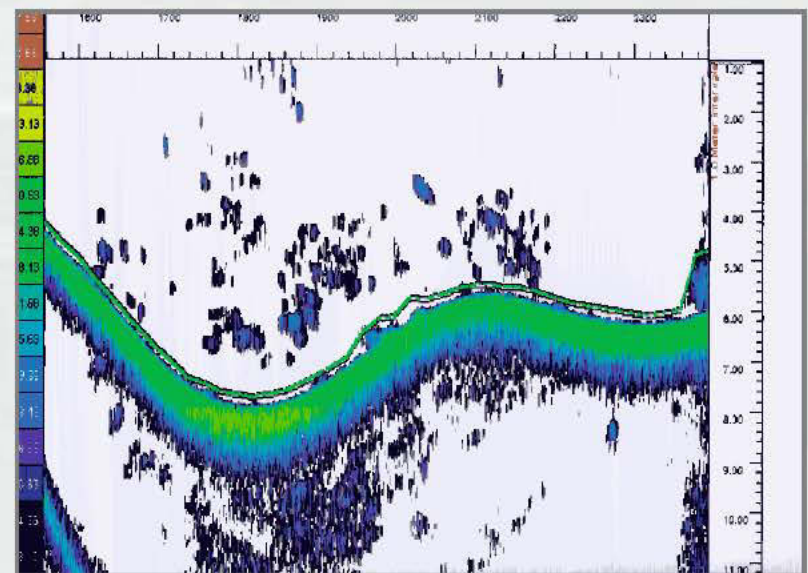
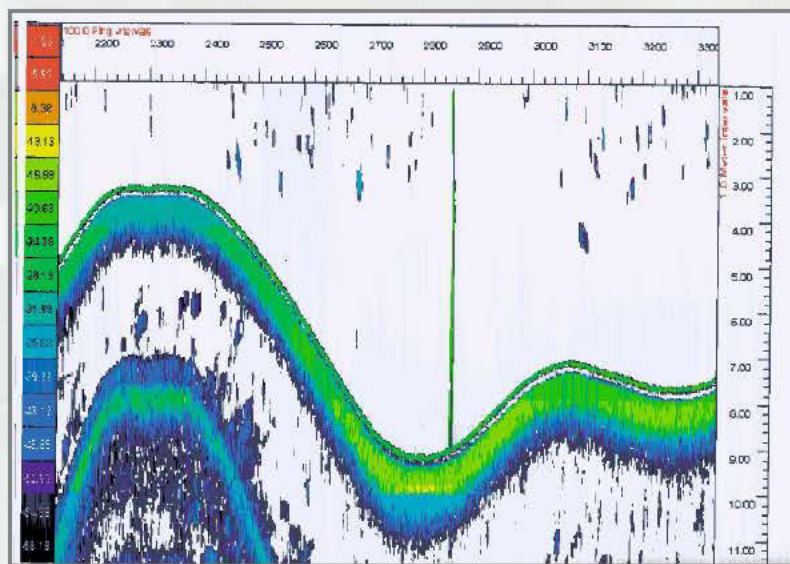
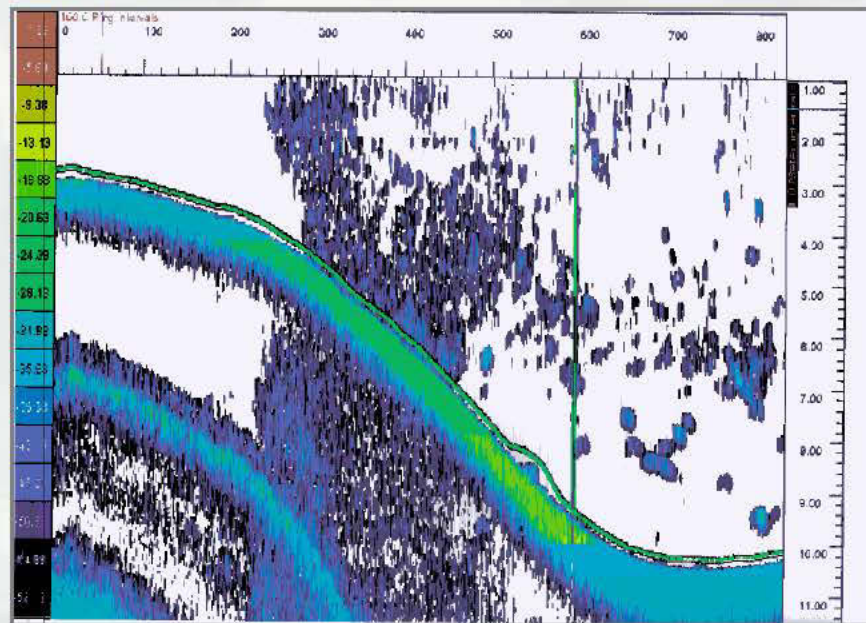






---

**BUILDING STRONG®**





**BUILDING STRONG®**

## Side Channel Enhancement Dike (SCED)

Share

More info

SCED DIKE

APPLIED  
**RIVER**  
ENGINEERING CENTER



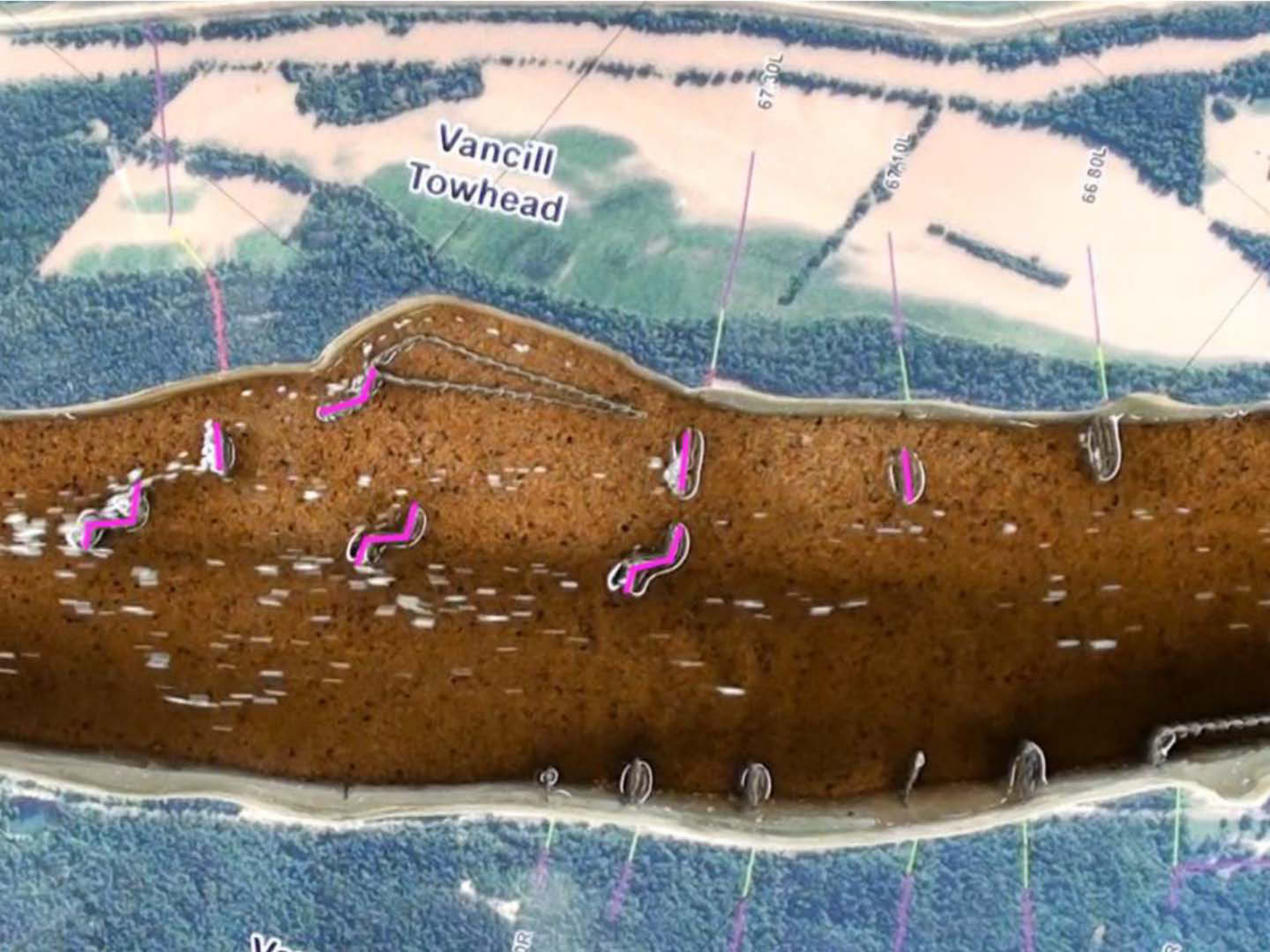
**BUILDING STRONG®**

Vancill  
Towhead

67 30L

67 10L

66 80L





**Bull Shark, the most aggressive shark on the planet, has killed the most humans, 11 feet long, 500 pounds**



---

**BUILDING STRONG®**



# 84 Pound Bull Shark caught in the Mississippi River above the Gulf of Mexico.

## Where was it caught?

New Orleans, LA 105 miles

Baton Rouge, LA 170 Miles

Natchez, MS 361 Miles

Memphis, TN 740 miles

St. Louis MO 1135 Miles

Alton, IL 1154 Miles



---

**BUILDING STRONG®**