

Evaluating Environmental Flows for the Rio Grande Silvery Minnow

Dr. Michael Porter
Fishery Biologist
Albuquerque District

EWN workshop
March 31, 2015



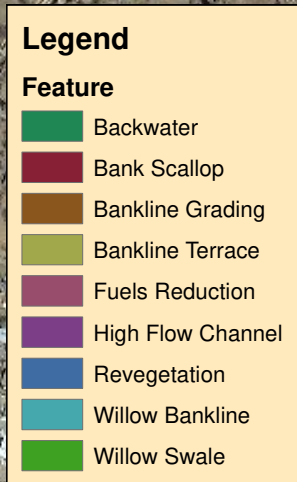
U.S. ARMY



US Army Corps of Engineers
BUILDING STRONG®
and Taking Care of People!



Environmental Flow function of Geomorphology Hydrology Ecology



Spawning and Nursery Habitat



BUILDING STRONG[®]
and Taking Care of People!

Recruitment Analysis

Evaluate spring runoff flows for fish recruitment and overbanking flows through the Middle Rio Grande Valley



- Analysis: focus on recruitment trends (young fish produced May-July)
- Question: production determined by ...
 - Spring volume?
 - Spring hydrograph?
 - Inundation area?

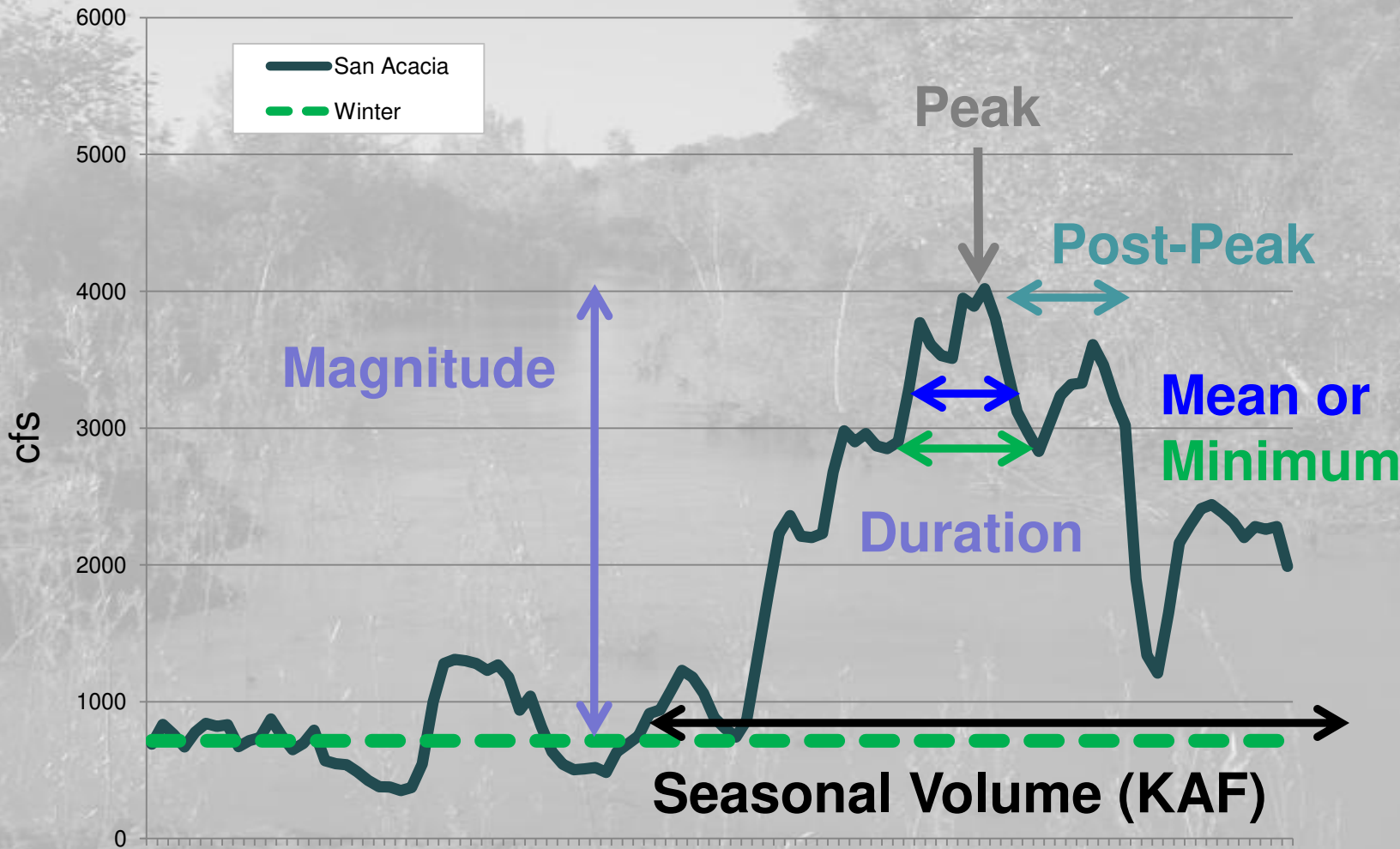


BUILDING STRONG®
and Taking Care of People!

Environmental Flow

- Analysis: focus on population and production trends
 - Exploratory data analysis
 - Spring hydrograph – How to describe the hydrograph?
- Spring volume – three month volume (acre-feet)
- Inundation area – as a function of five day mean flow (acres)
- Spring hydrograph?
 - Peak Flow (cfs)
 - Mean or Minimum Flow (cfs) for how many days (5, 7, 9, ...?)
 - Distribution of flow (around or following peak?)
 - Number of days (May-July) above a target flow (cfs)





BUILDING STRONG®
and Taking Care of People!

Flow Metrics

Evaluated different ways (28) to describe spring flow

Peak flow (cfs)

April - June volume (KAF)

May - July volume (KAF)

Total Inundated Area (acres)

5, 7, 9, 11 day mean & minimum cfs

15, 20, 30 day minimum cfs

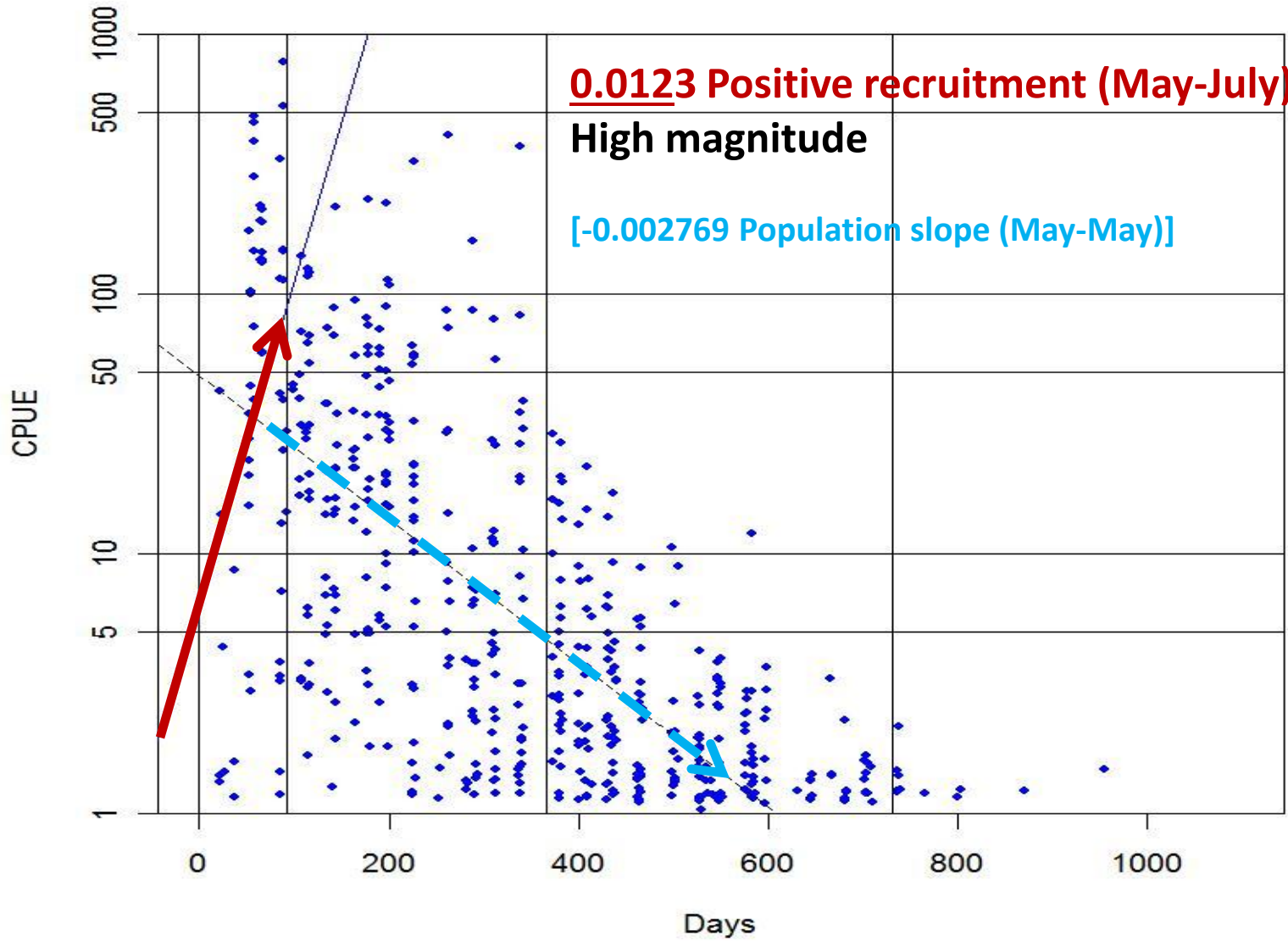
Days above 1000-6500 cfs

Better r^2 using post-peak versus symmetrical metrics

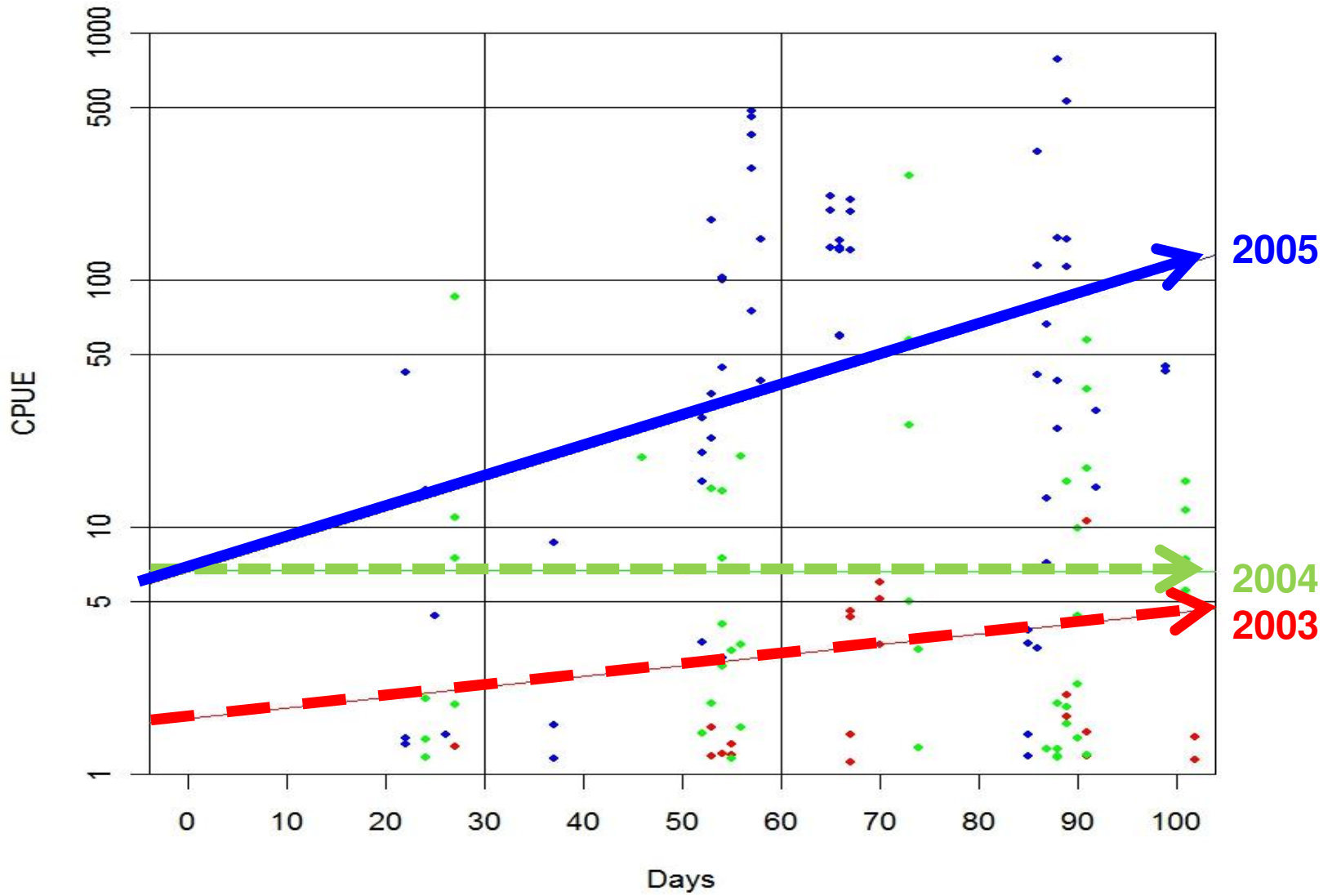


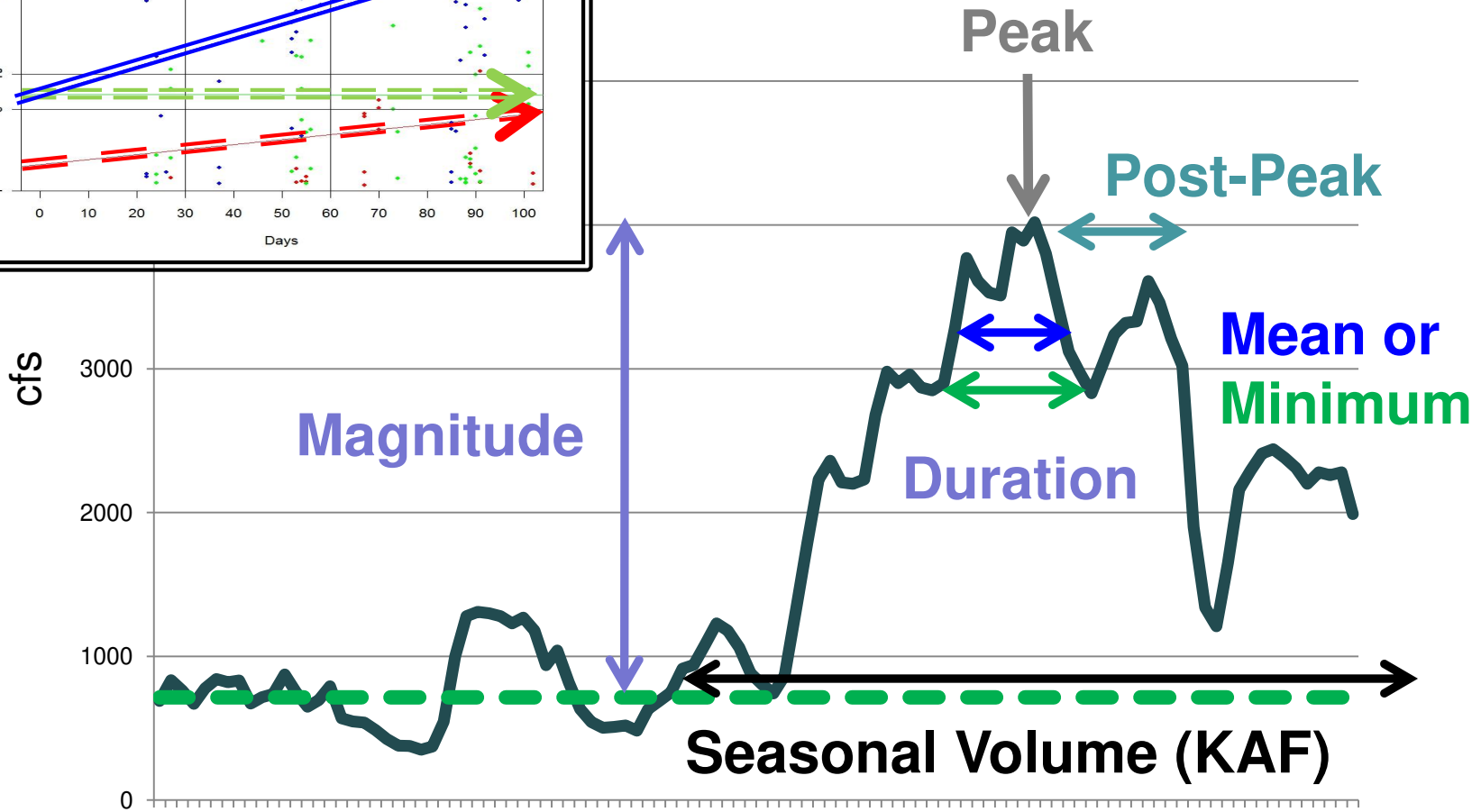
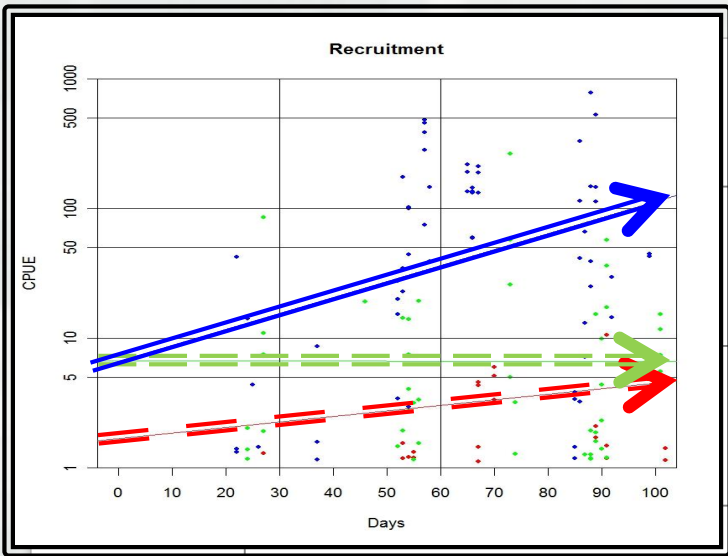
BUILDING STRONG[®]
and Taking Care of People!

2005



Recruitment





Thanks to

Ondrea Hummel – Albuquerque District

Ryan Gronewold – Albuquerque District

Susan Bittick – Albuquerque District

Daniel Goodman – Montana State University

Ken Gerow – University of Wyoming

For their assistance and support.



BUILDING STRONG[®]
and Taking Care of People!

Questions?



Bill Tondreau

Michael Porter

Michael.D.Porter@usace.army.mil

505-342-3264

Ondrea Hummel

Ondrea.C.Hummel@usace.army.mil

505-342-3375



BUILDING STRONG®
and Taking Care of People!



BUILDING STRONG[®]
and Taking Care of People!