

# Beneficial Use of Dredged Material in the Galveston District

**Tricia Campbell, P.E.**

Operations Manager

U.S. Army Corps of Engineers

Galveston District

*Galveston District*

*Custodians of the Coast*



US Army Corps of Engineers  
**BUILDING STRONG®**



# Galveston District Beneficial Use Project Locations



**Galveston District – Custodians of the Coast**



**BUILDING STRONG®**



## Galveston District Beneficial Use Statistics

	FY 10	FY 12	FY 13
<b>Total Amount Dredged</b>	24,500,000	20,000,000	20,500,000
<b>Total Amount Used for BU</b>	4,000,000	3,200,000	4,300,000
<b>Percent Beneficial Use</b>	~16%	~16%	~20%



# Notable Galveston District Beneficial Use Projects



**Galveston District –Custodians of the Coast**



**BUILDING STRONG®**



# Houston Ship Channel—Upper Galveston Bay



Aerial of Existing Atkinson Island marsh cells and new cells currently under construction (M7/8/9,&10)



***Galveston District—Custodians of the Coast***



**BUILDING STRONG®**



# Houston Ship Channel—Upper Galveston Bay

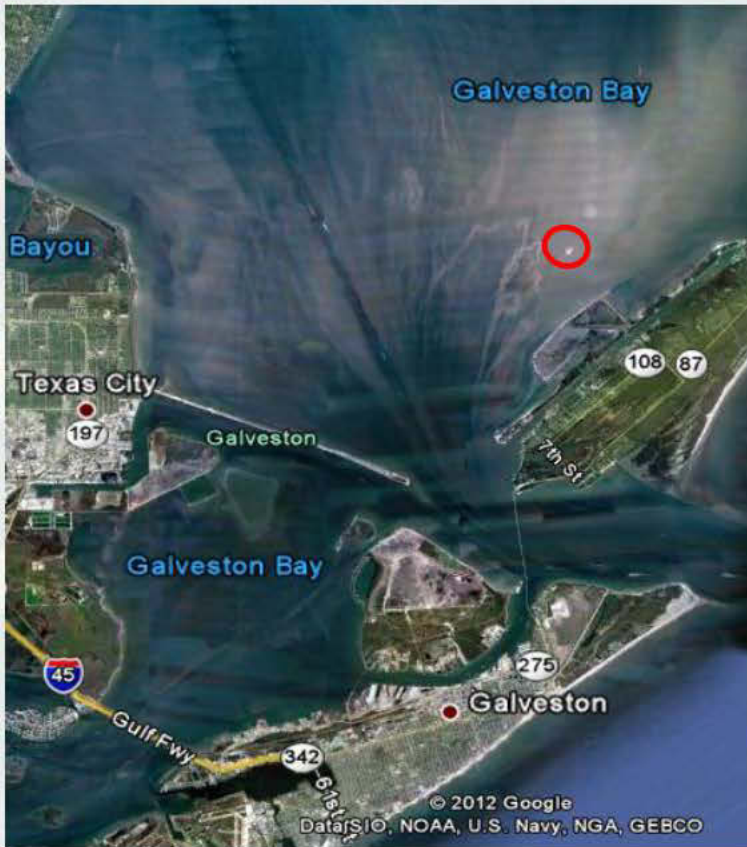
Atkinson Island marsh cell under construction





# Houston Ship Channel—Lower Galveston Bay

## Evia Island--Bird Island Creation



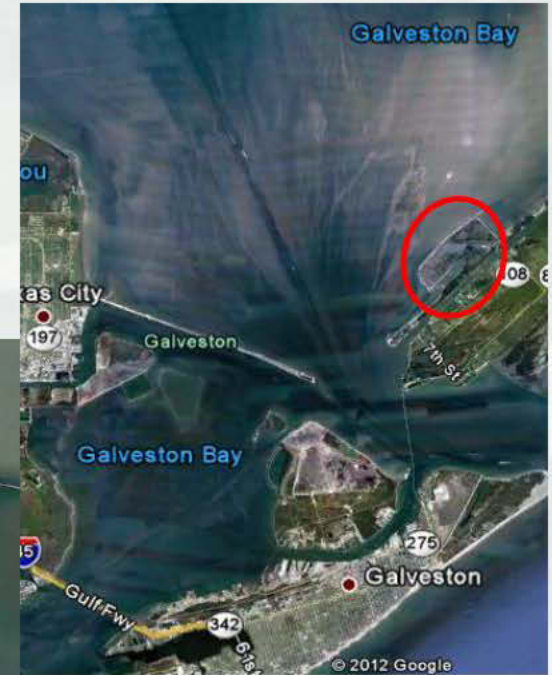
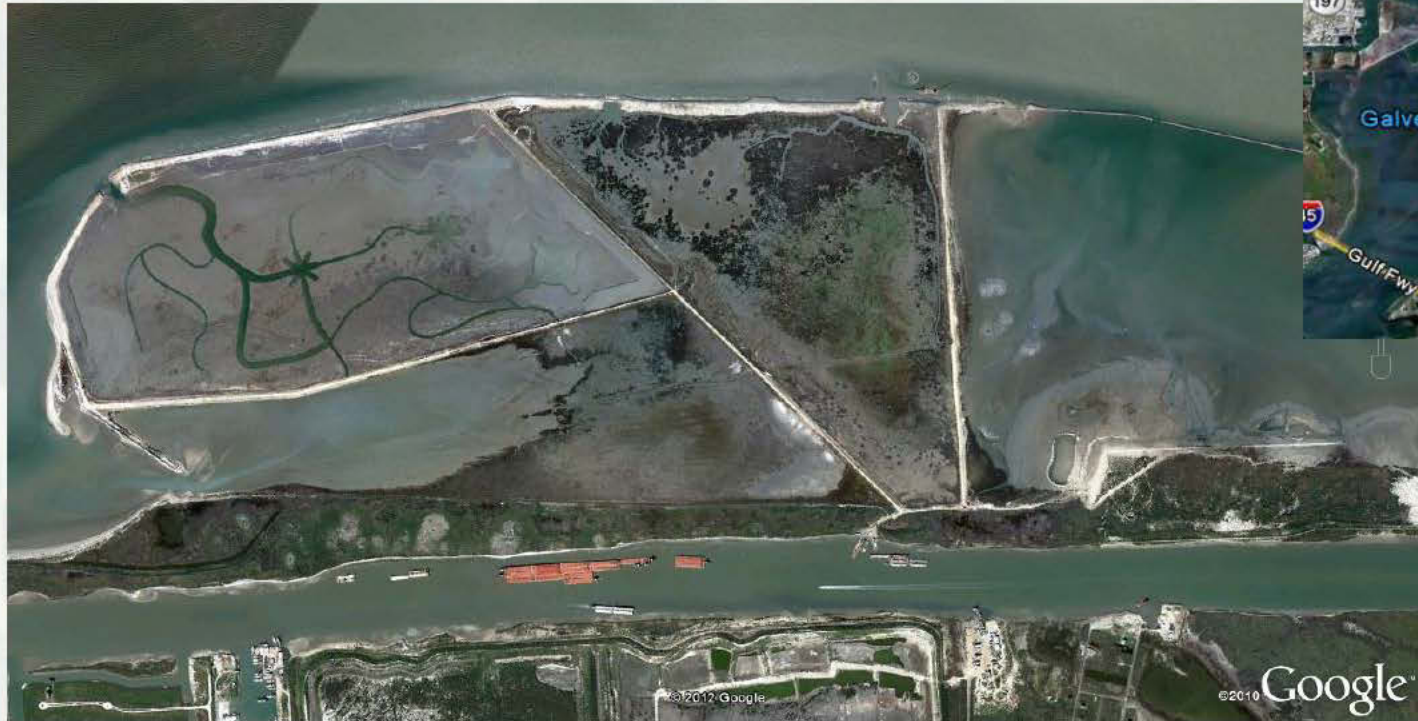
**Galveston District—Custodians of the Coast**



**BUILDING STRONG®**

# Houston Ship Channel—Lower Galveston Bay

Bolivar Marsh—  
Channelization and  
Marsh Creation (ongoing)



***Galveston District—Custodians of the Coast***



**BUILDING STRONG®**

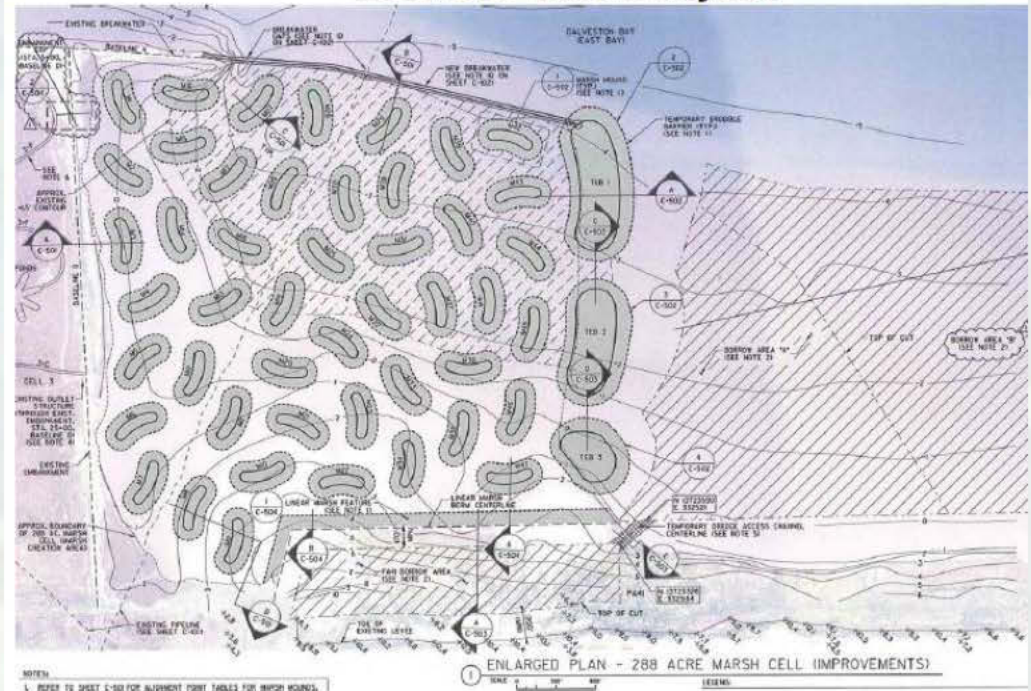


# Houston Ship Channel—Lower Galveston Bay

## Bolivar Marsh—Marsh Creation (ongoing)



288 Acre Marsh Layout



# Neches River Channel (Sabine-Neches Waterway) Bessie Heights Marsh



## Marsh Creation

Channels form shortly after pumping of dredged material into open water area



Established 28 acres of marsh one year later

***Galveston District – Custodians of the Coast***



**BUILDING STRONG®**



# Texas City Channel



727.520.8181  
www.aerophoto.com

Texas City Channel

Image # 110524 6037  
Date 05.24.11

## Construction of containment levees for Beneficial Use Site

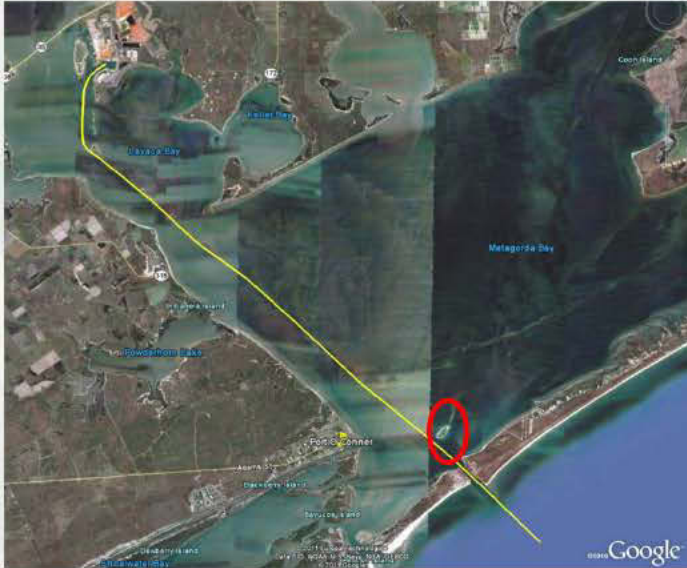
***Galveston District – Custodians of the Coast***



**BUILDING STRONG®**

# Matagorda Ship Channel--Sundown Island

Nourishment along eroded areas



**Galveston District – Custodians of the Coast**



**BUILDING STRONG®**



# Chocolate Bayou



Construction of  
Beneficial Use Sites



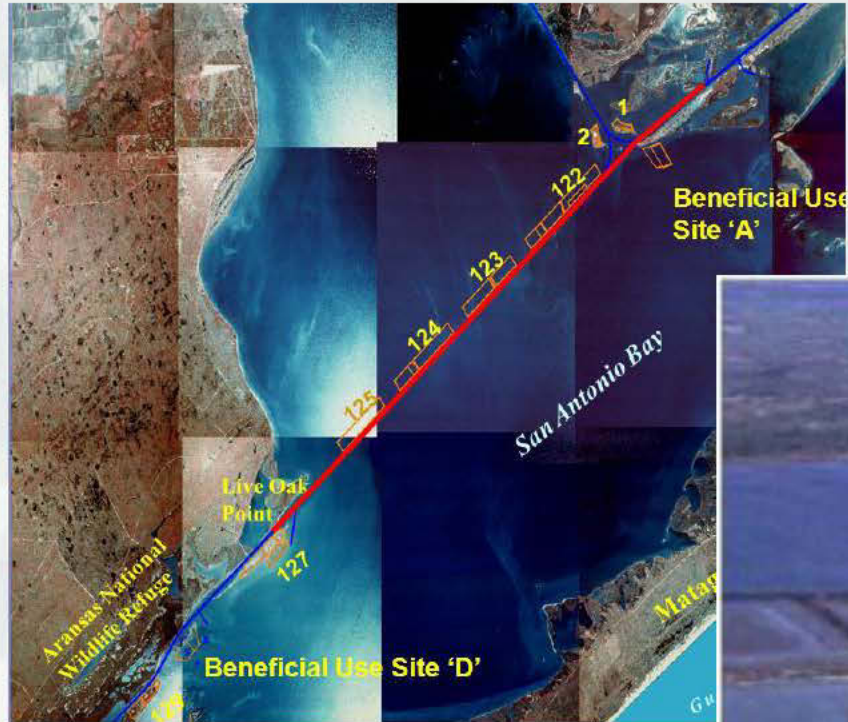
**Galveston District – Custodians of the Coast**



**BUILDING STRONG®**

# GIWW-Aransas National Wildlife Reserve

## Beneficial Use Projects



Create new cells at  
BUS A, BUS B, & BUS D



**Galveston District – Custodians of the Coast**



**BUILDING STRONG®**



# Gulf Intracoastal Waterway

## Beneficial Use Projects

### Beach Nourishment

Little Beach



Rollover



# Channel to Port Mansfield

## Beach Nourishment





# Brazos Island Harbor

## Beach Nourishment



# Mouth of the Colorado River

## Beach Nourishment



***Galveston District – Custodians of the Coast***



**BUILDING STRONG®**



# How is SWG trying to increase BU?

- Actively identify projects
- Re-evaluate our DMMPs
- Work with the RSM program
- Bring together Corps and Resource Agencies



# 2011 Beneficial Use of Dredged Material Workshop—30 August 2011

---

***A workshop to discuss upcoming USACE projects and beneficial use opportunities along the Texas coast***



***Galveston District—Custodians of the Coast***



**BUILDING STRONG®**



# 2011 Beneficial Use of Dredged Material Workshop

- Purposes:
  - ▶ Bring together State and Local Resource Agencies to inform them of upcoming O&M projects
  - ▶ Provide a forum for brainstorming potential BU opportunities
  - ▶ Answer questions about procedures necessary to move forward with BU projects



# 2011 Beneficial Use of Dredged Material Workshop

## ■ Participants

### ► About 60 participants from Agencies and Corps

Atkins Global  
Chambers Liberty County Navigation District  
Chambers County Commissioner  
Ducks Unlimited  
Galveston Bay Foundation  
Matagorda County Navigation District #1  
National Oceanic and Atmospheric Administration (NOAA)  
Shead Conservation  
Shelmark Engineering  
Texas Coastal Wildlife Refuge  
Texas Parks and Wildlife Department  
Texas General Land Office (GLO)  
Texas Commission on Environmental Quality (TCEQ)  
USACE Galveston  
USACE Engineer Research and Development Center (ERDC)  
USDA  
U.S. Fish and Wildlife Service





# 2011 Beneficial Use of Dredged Material Workshop

- Presentation Topics
  - ▶ Regional Sediment Management
  - ▶ Engineering With Nature
  - ▶ NEPA Compliance
  - ▶ Planning for Beneficial Use
  - ▶ FY12-13 Dredging Projects and Notable BU projects
  - ▶ Ongoing Dredged Material Management Plans



# 2011 Beneficial Use of Dredged Material Workshop

- Discussion Topics
  - ▶ Brainstorming potential projects
  - ▶ Identification of Needs





# 2011 Beneficial Use of Dredged Material Workshop

- Conclusion
  - ▶ Desire for more frequent BUDM meetings
  - ▶ Implement better communication between Corps and Resource Agencies
  - ▶ Begin identifying potential BU projects with teams
- 2012 Workshop: Tentatively Nov 6, 2012



# Questions?



**Tricia Campbell, P.E.**

Operations Manager

U.S. Army Corps of Engineers

Galveston District

409-766-3153

[tricia.c.campbell@usace.army.mil](mailto:tricia.c.campbell@usace.army.mil)

*Galveston District – Custodians of the Coast*



**BUILDING STRONG®**