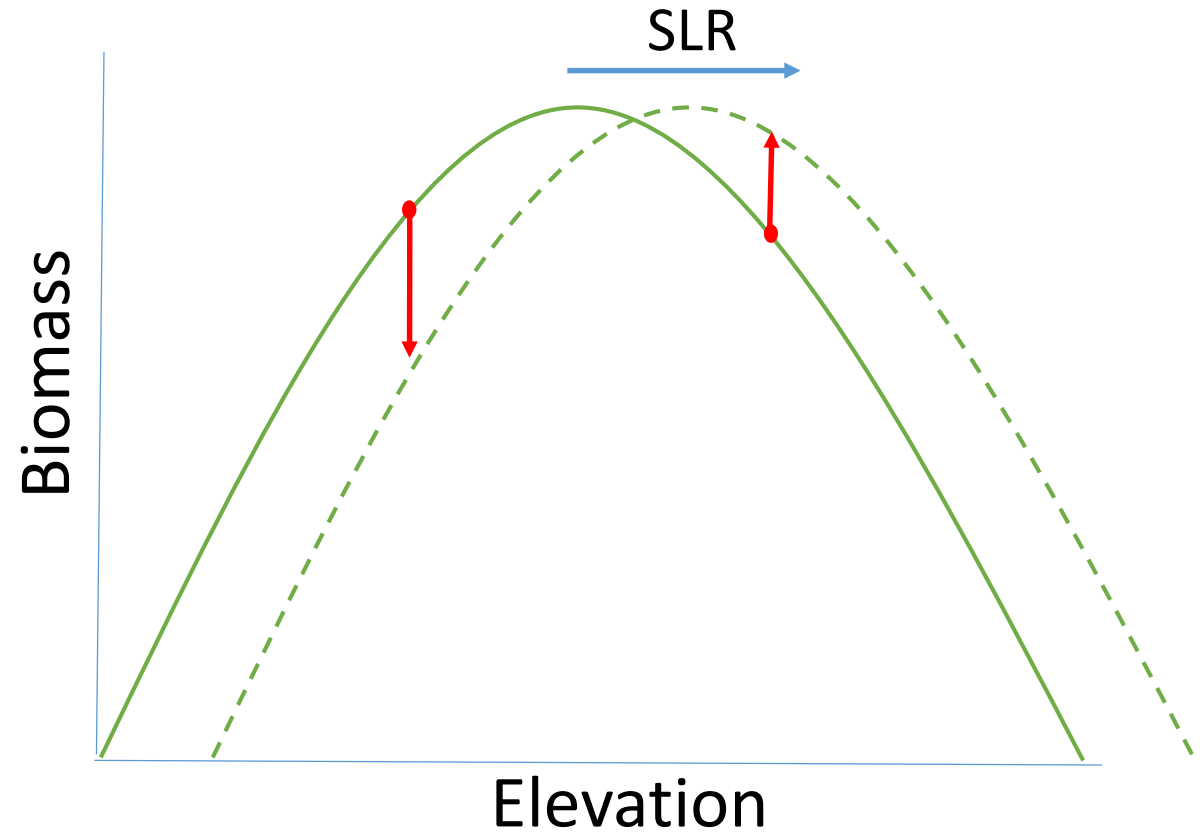
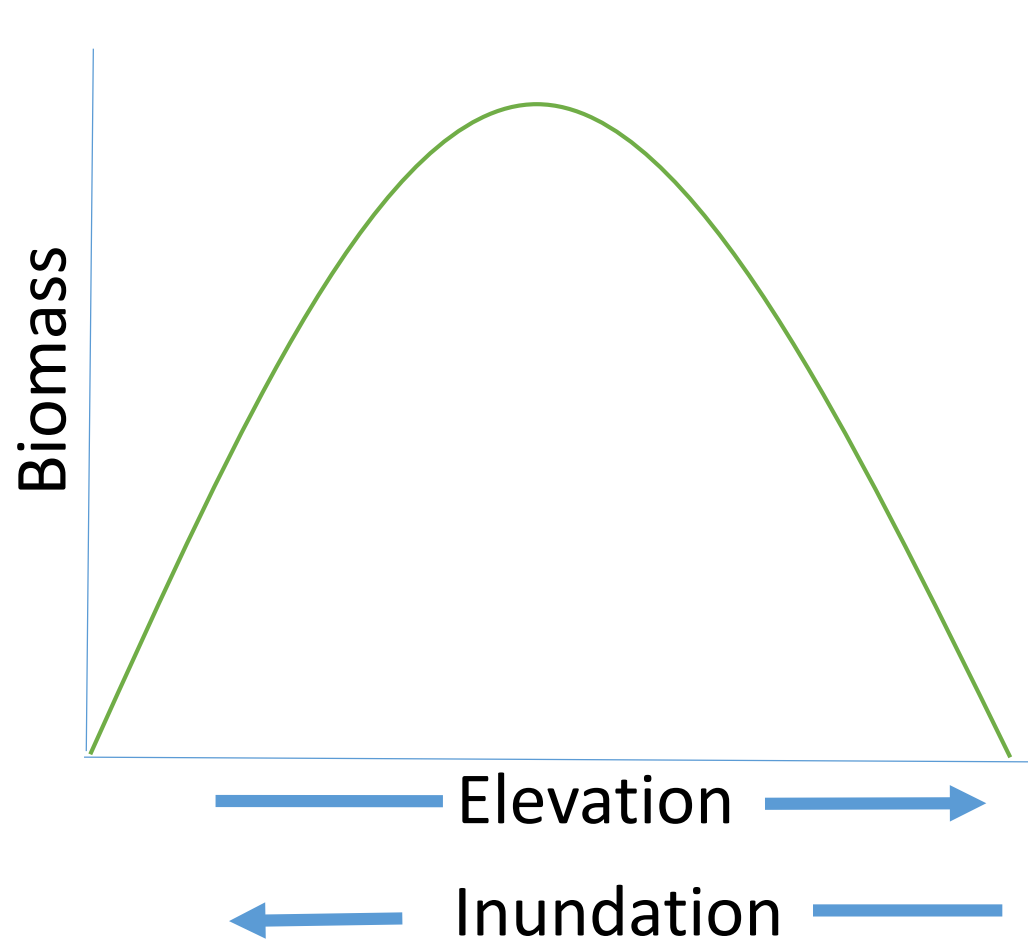
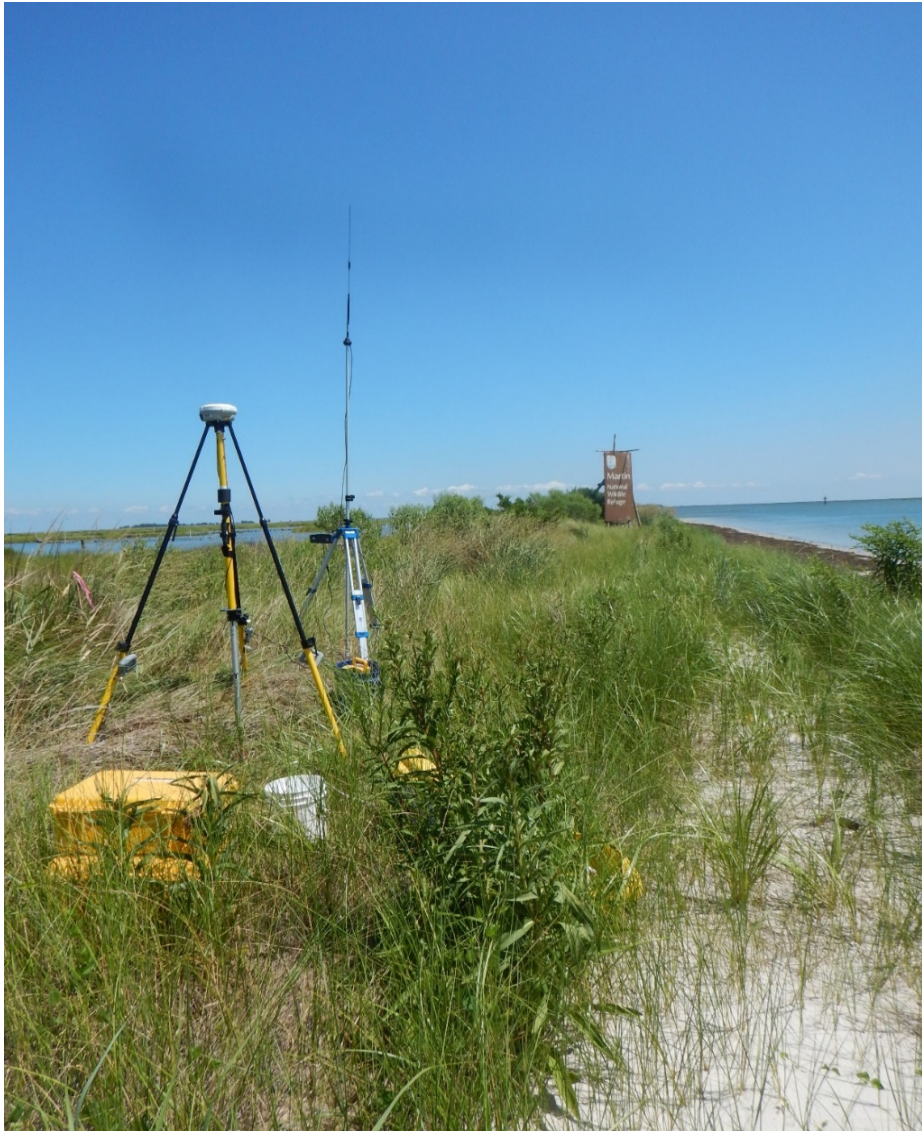


# *Spartina alt.* distribution as an indicator of resilience to SLR



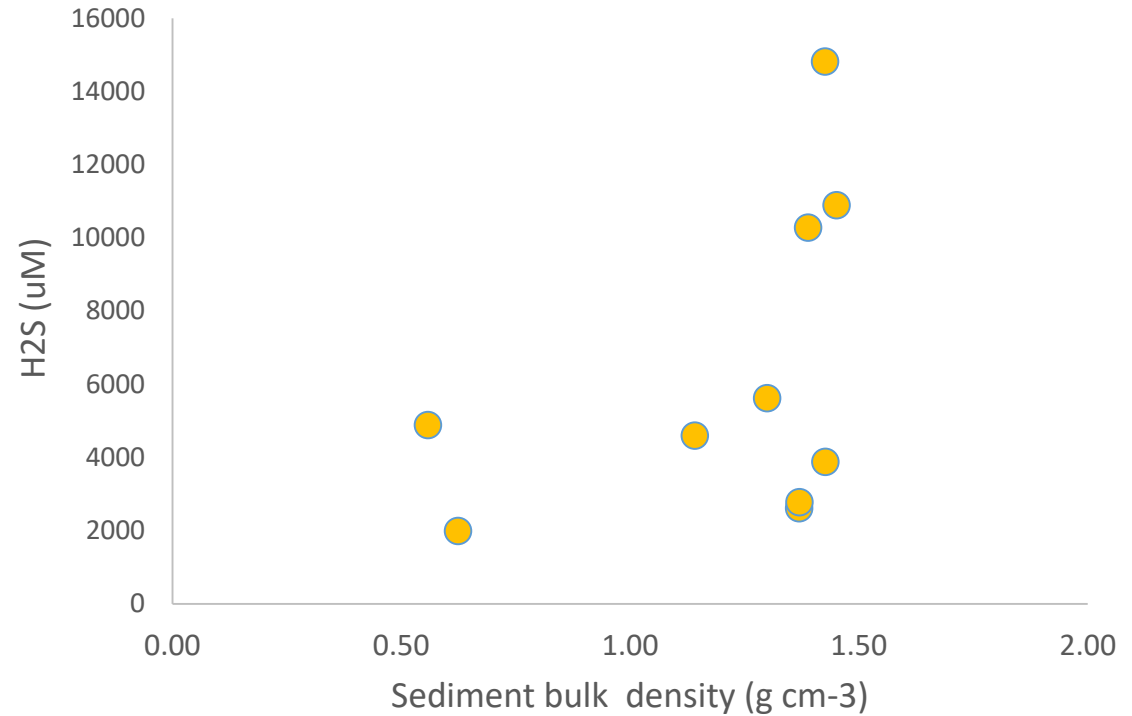
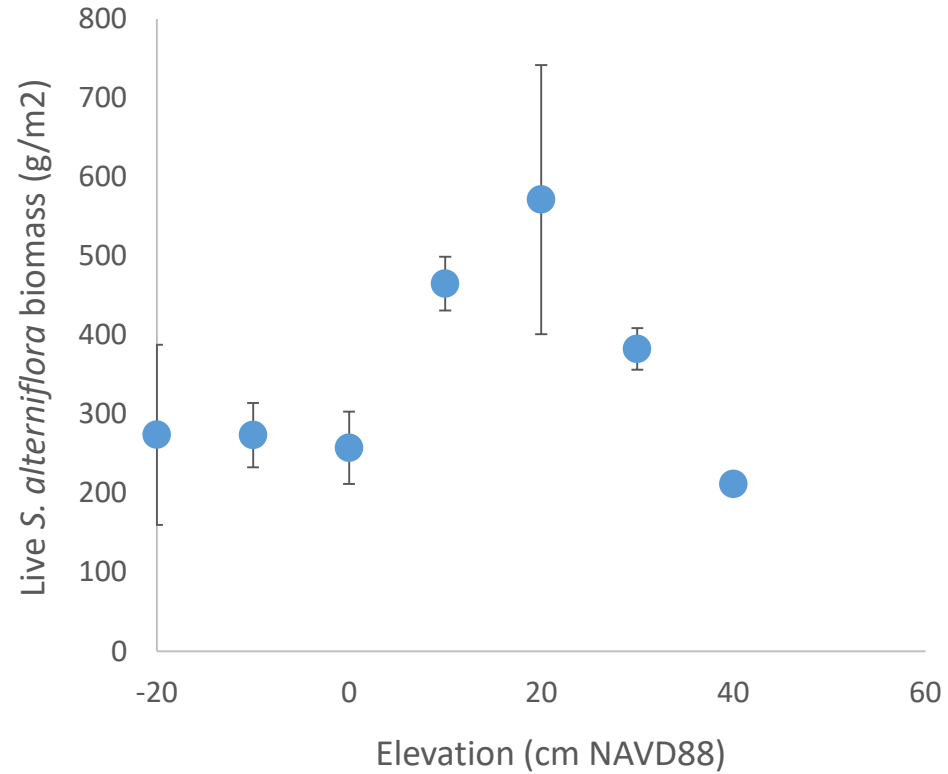
Elevation Benchmark  
(0.95m NAVD88)



Transect surveys to establish full elevation range occupied  
by *S. alterniflora*



# Intertidal Marsh - Pre-placement conditions



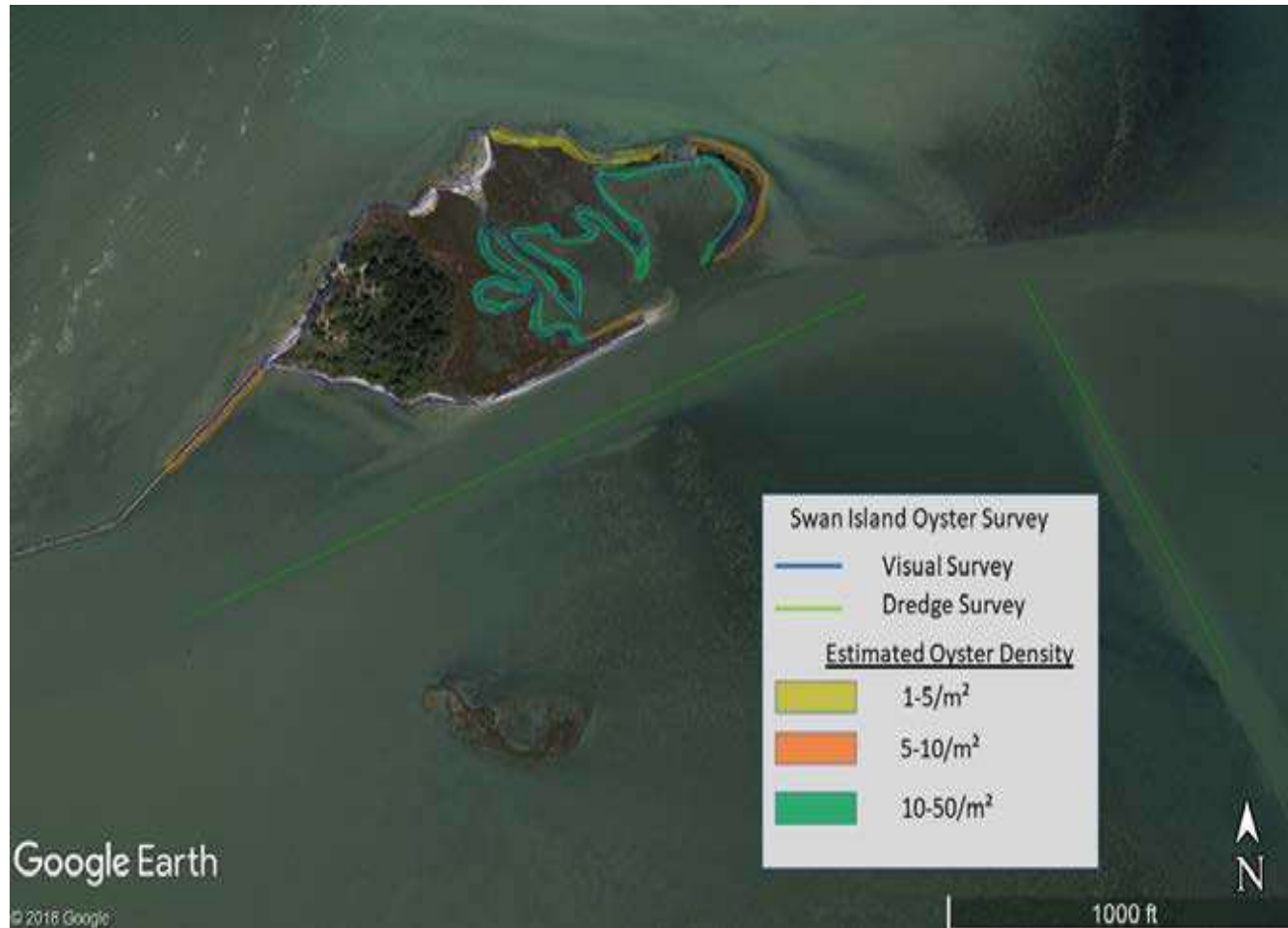
*S. alterniflora* grows over a ~60 cm elevation range

Sediment characteristics and porewater sulfide concentrations widely variable

# SAV – percent cover, stem height, plot elevation



# Oyster presence/absence/ size range



- Intact intertidal oyster community
- multiple year classes
  - no oysters found in channel



# What we envision doing

- elevation
- shoreline position
- vegetative success – intertidal and SAV
- sediment characteristics (grain size/carbon)
- accretion?
- oysters
- inundation of intertidal areas (fish access)

