

Ft. Sheridan and Northerly Island as examples of Engineering with Nature projects



Ft. Sheridan Ravine and Coastal Restoration



Northerly Island



US Army Corps
of Engineers®



FT. SHERIDAN RAVINES AND COASTAL RESTORATION

2

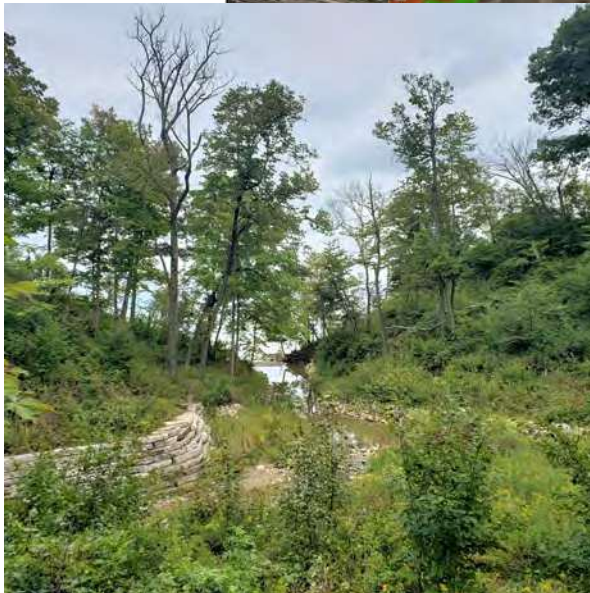


EWN Principle: Holistic

Looking at the Ecosystem
from **Upland to Underwater**

Restored 207 acres

- Four main ravines
- Riparian woodlands
- Bluff
- Dunes
- Lacustrine habitat

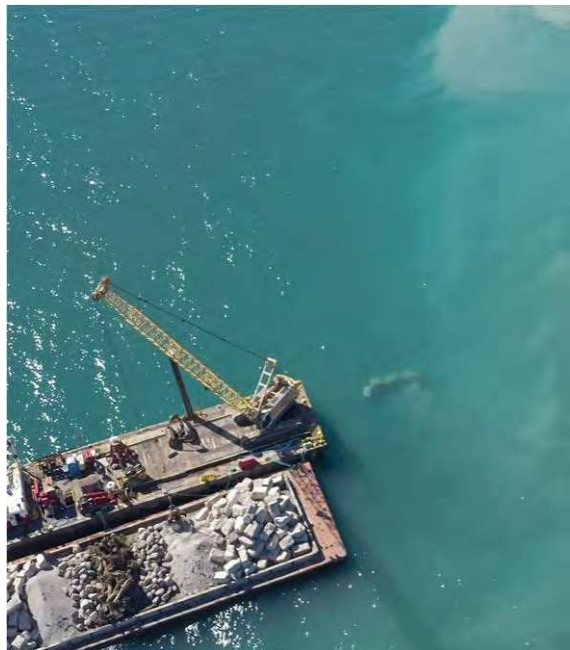


US Army Corps
of Engineers®



FT. SHERIDAN RAVINES AND COASTAL RESTORATION

3



EWN Principle: Collaborative

Working with partners throughout **Entire Project Life**

Partners focus points:

- Ravines are active
- Accessible Nature
- Fish habitat
- Shoreline

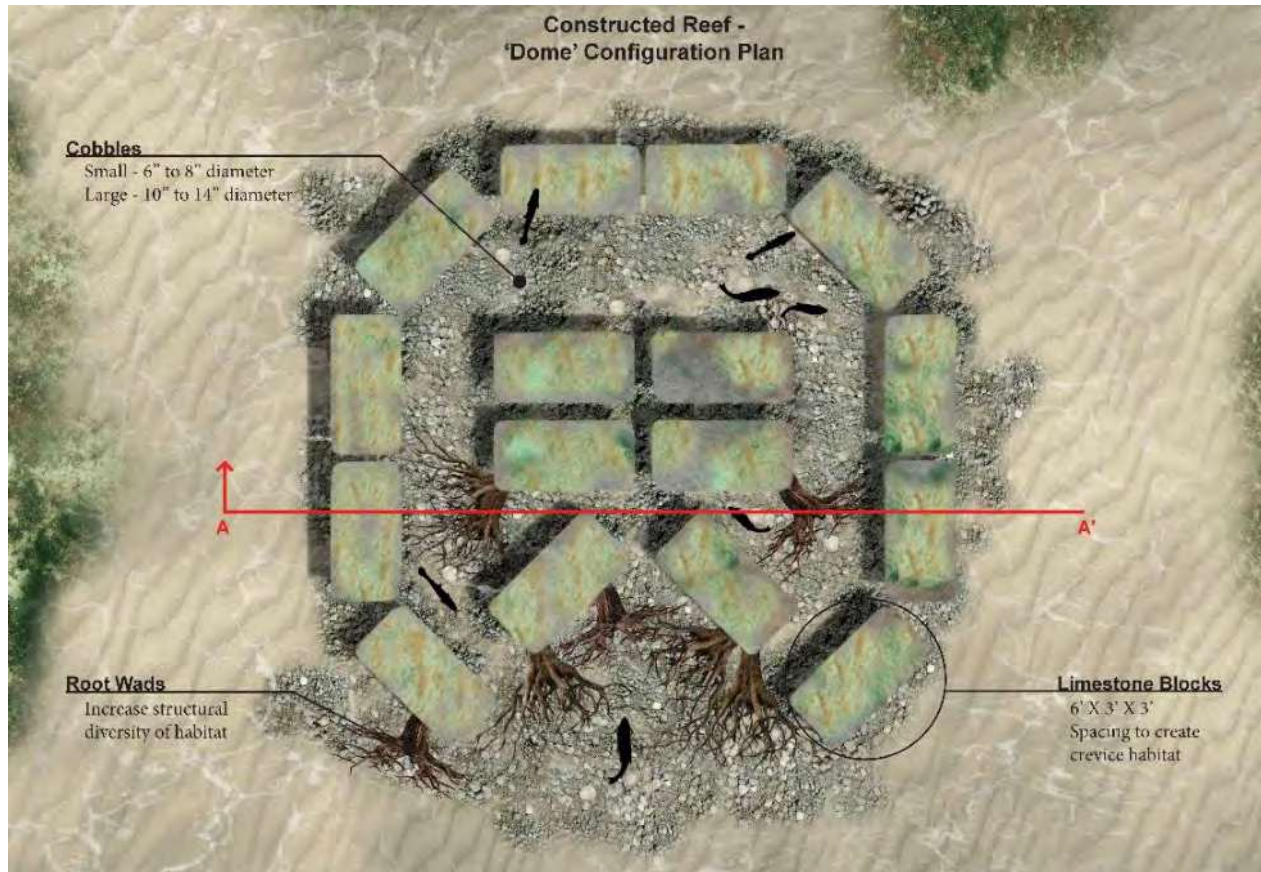


US Army Corps
of Engineers®



FT. SHERIDAN RAVINES AND COASTAL RESTORATION

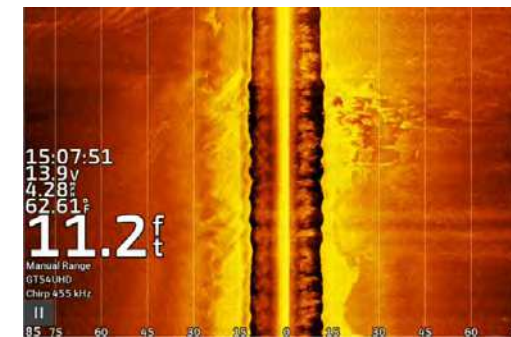
5



EWN Principles: Innovative and Sustainable

Incorporating learned science into **Practice** as we move toward **Dynamic Equilibrium**

- Mimicking natural reef function with design configurations
- Utilizing natural materials
- Existing in a dynamic system



Dynamic system



US Army Corps
of Engineers®



NORTHERLY ISLAND



EWN Principles: A Systems Approach

Living in a complex system, where **Nature** meets **Urban**



Northerly Island exists within the Chicago Shoreline system and interacts with:

- The City
- People
- Lake Michigan
- Wildlife



US Army Corps
of Engineers®



NORTHERLY ISLAND



EWN Principles:
Efficient and cost-effective

Reusing **Materials** and preserving **History**

No materials removed but were reused

Contoured hills built from:

- Airport asphalt remains
- Excavated sand and soil from pond

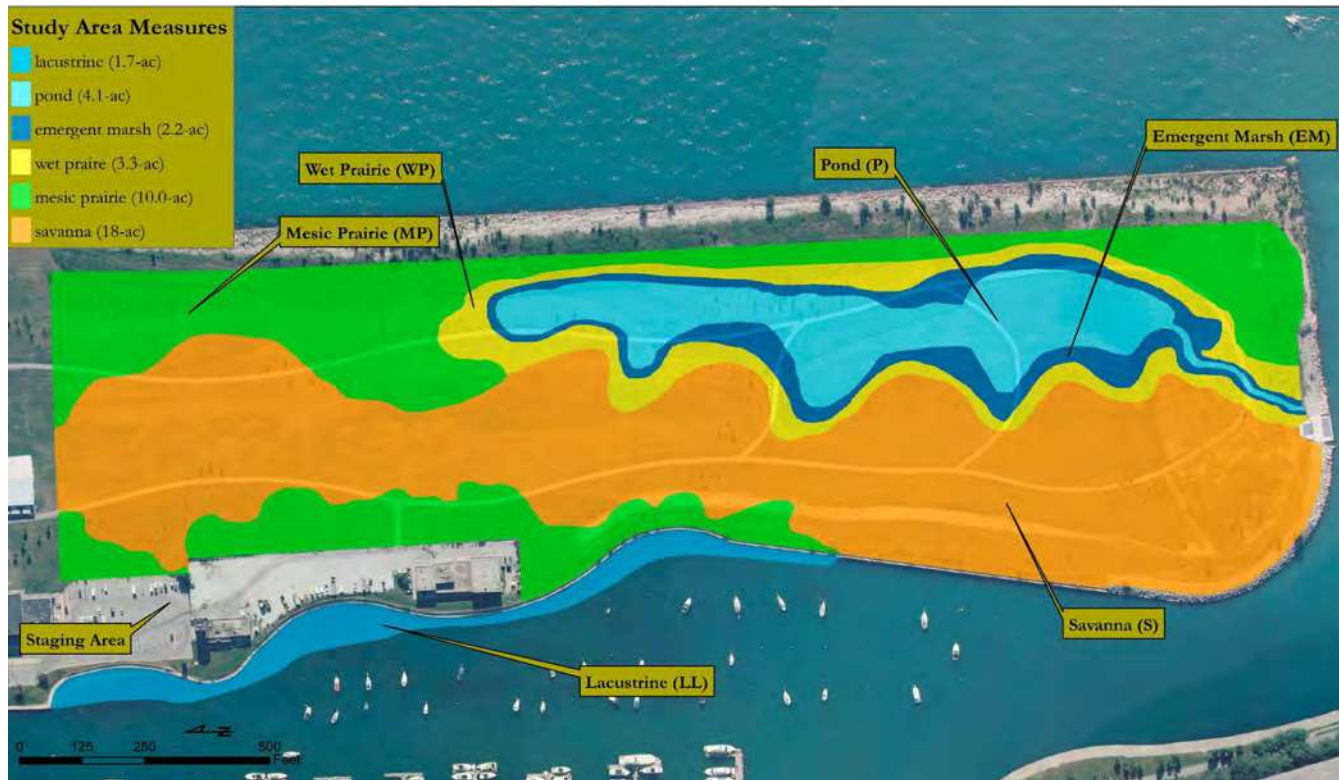
Preserved historic timber crib discovered during pond excavation



US Army Corps
of Engineers®



NORTHERLY ISLAND



EWN Principles: Collaborative and Socially Responsive

Working with partners and experts to build a natural **Oasis for people and Wildlife**

Partnered with Chicago Park District to implement Framework Plan

Worked with experts for habitat design:

- National Audubon Society
- Field Museum
- Openlands
- Forest Preserve of Cook County
- Shedd Aquarium



US Army Corps
of Engineers®

