



# Engineering With Nature<sup>®</sup> to Increase Infrastructure Resilience

May 4, 2023, 10:30 a.m.



**2023** JOINT ENGINEER TRAINING  
CONFERENCE & EXPO



samejetc.org  @SAMENational  @SAME\_National | #SAMEJETC23  "Society of American Military Engineers"

# Engineering With Nature to Increase Infrastructure Resilience

**Moderator:** Hollie Janson Schmidt, Jacobs

## Agenda:

- **Leveraging Engineering With Nature® (EWN®) to Support Military Readiness and Installation Resilience**
  - **Dr. Burton Suedel**, Research biologist, U.S. Army Engineer Research and Development Center
- **Engineering With Nature® (EWN®) for the Department of the Navy**
  - **Hollie Janson Schmidt**, Global Senior Director, Sustainability & Climate Response – Americas, Jacobs
- **Implementing Nature Based Infrastructure (NBI)**
  - **Sam Whitin**, National Service Line Program Manager for Coastal Resilience, EA Engineering, Science, and Technology
- **Intentional Alignment of Engineering and Natural Processes**
  - **Scott Pippin**, Public Service Associate; Strategic Operations And Planning Assistance, University of Georgia Institute for Resilient Infrastructure Systems (IRIS)





# Introduction



**2023** JOINT ENGINEER TRAINING  
CONFERENCE & EXPO



[samejetc.org](http://samejetc.org)  [@SAMENational](https://www.facebook.com/SAMENational)  [@SAME\\_National](https://twitter.com/SAME_National) | [#SAMEJETC23](https://www.instagram.com/SAMEJETC23)  "Society of American Military Engineers"



2023

JOINT  
ENGINEER  
TRAINING  
CONFERENCE  
& EXPO

MISSION  
SUCCESS  
STARTS  
HERE  
SAMEJETC.ORG

MAY  
2-4  
2023

San Antonio,  
TEXAS



# Scott Pippin



Public Service Associate;  
Strategic Operations And Planning Assistance



Scott is an attorney and community planner who joined the University of Georgia's Carl Vinson Institute of Government's Planning and Environmental Services unit in 2014. He works on a variety of issues particularly focusing on community resilience to natural hazards and climate change, and the use of nature-based and green infrastructure practices. He also conducts research and provides technical assistance for public sector clients related to environmental and natural resource planning, zoning and land use, urban and community planning, deployment of solar installations, and general economic development.





# Intentional Alignment of Engineering and Natural Processes

**Scott Pippin**

Public Service Associate;  
Strategic Operations And Planning Assistance, UGA

JETC San Antonio, Texas  
4 May 2023



**2023** | JOINT ENGINEER TRAINING  
CONFERENCE & EXPO



[samejetc.org](http://samejetc.org)  [@SAMENational](https://www.facebook.com/SAMENational)  [@SAME\\_National](https://twitter.com/SAME_National) | [#SAMEJETC23](https://www.instagram.com/SAMEJETC23)  "Society of American Military Engineers"



# FORT BENNING PROJECTS – Inside the Fenceline

## DEFENSE COMMUNITY RESILIENCE PROGRAM



**Kings  
Pond**



**Laundry  
Creek**



**Tiger Creek**



**South  
Range**



**Stormwater**



**2023** JOINT ENGINEER TRAINING  
CONFERENCE & EXPO



[samejetc.org](http://samejetc.org)

[f @SAMENational](https://www.facebook.com/SAMENational)

[t @SAME\\_National](https://twitter.com/SAME_National)

[#SAMEJTC23](https://www.instagram.com/SAMEJTC23)

[in "Society of American Military Engineers"](https://www.linkedin.com/company/Society_of_American_Military_Engineers)



# FORT BENNING PROJECTS – Inside the Fenceline

DEFENSE COMMUNITY RESILIENCE PROGRAM

## TIGER CREEK

Geomorphic analysis to develop installation-wide watershed assessments.



**2023** JOINT ENGINEER TRAINING  
CONFERENCE & EXPO



[samejetc.org](http://samejetc.org)

[@SAMENational](https://www.facebook.com/SAMENational)

[@SAME\\_National](https://twitter.com/SAME_National)

[#SAMEJTC23](https://www.instagram.com/SAMEJTC23)

[in](https://www.linkedin.com/company/Society%20of%20American%20Military%20Engineers) "Society of American Military Engineers"



# FORT BENNING PROJECTS – Inside the Fenceline

DEFENSE COMMUNITY RESILIENCE PROGRAM

## SOUTH RANGE COMPLEX

Ecosystem  
Management  
and Erosion  
Control



**2023** JOINT ENGINEER TRAINING  
CONFERENCE & EXPO



samejetc.org  @SAMENational  @SAME\_National | #SAMEJETC23  "Society of American Military Engineers"



# FORT BENNING PROJECTS – Inside the Fenceline

DEFENSE COMMUNITY RESILIENCE PROGRAM

## LAUNDRY CREEK

Natural  
Infrastructure  
Approach



**2023** JOINT ENGINEER TRAINING  
CONFERENCE & EXPO



samejetc.org  @SAMENational  @SAME\_National | #SAMEJTC23  "Society of American Military Engineers"



# FORT BENNING PROJECTS – Inside the Fenceline

DEFENSE COMMUNITY RESILIENCE PROGRAM

## KINGS POND DAM BREACH

Site Restoration/  
Reuse



**2023** JOINT ENGINEER TRAINING  
CONFERENCE & EXPO



[samejetc.org](http://samejetc.org)

[f @SAMENational](https://www.facebook.com/SAMENational)

[t @SAME\\_National](https://twitter.com/SAME_National)

[#SAMEJETC23](https://www.instagram.com/SAMEJETC23)

[in "Society of American Military Engineers"](https://www.linkedin.com/company/Society%20of%20American%20Military%20Engineers)



# FORT BENNING PROJECTS – Inside the Fenceline

DEFENSE COMMUNITY RESILIENCE PROGRAM

## KINGS POND DAM BREACH

Site Restoration/  
Reuse



**2023** JOINT ENGINEER TRAINING  
CONFERENCE & EXPO



samejetc.org  @SAMENational  @SAME\_National | #SAMEJTC23  "Society of American Military Engineers"

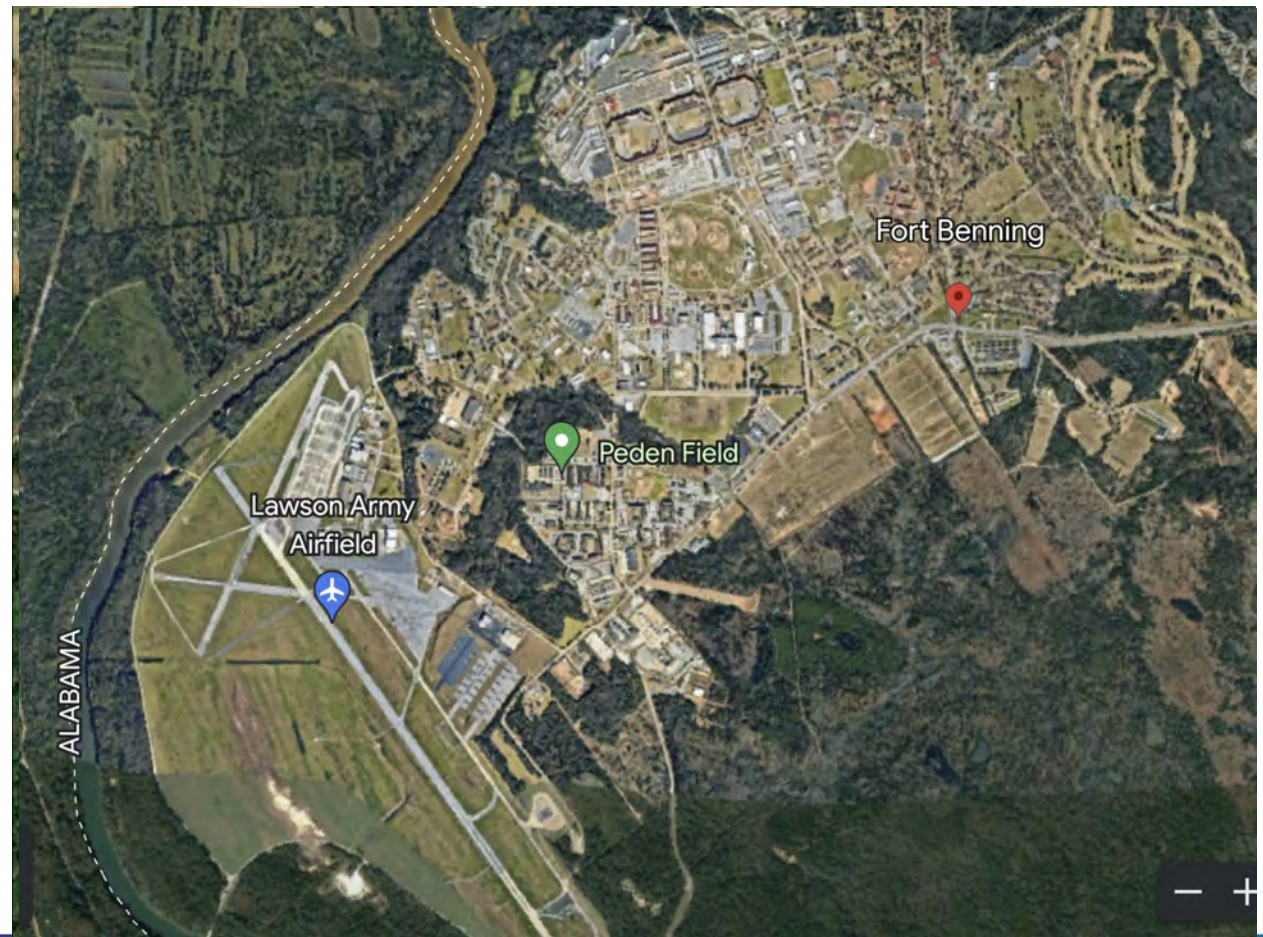


# FORT BENNING PROJECTS – Inside the Fenceline

DEFENSE COMMUNITY RESILIENCE PROGRAM

## STORMWATER SYSTEMS

Data development and incorporation of LEED Sustainable Sites credits.



**2023** JOINT ENGINEER TRAINING  
CONFERENCE & EXPO



[samejetc.org](http://samejetc.org)

[f @SAMENational](https://www.facebook.com/SAMENational)

[t @SAME\\_National](https://twitter.com/SAME_National)

[#SAMEJETC23](https://www.instagram.com/SAMEJETC23)

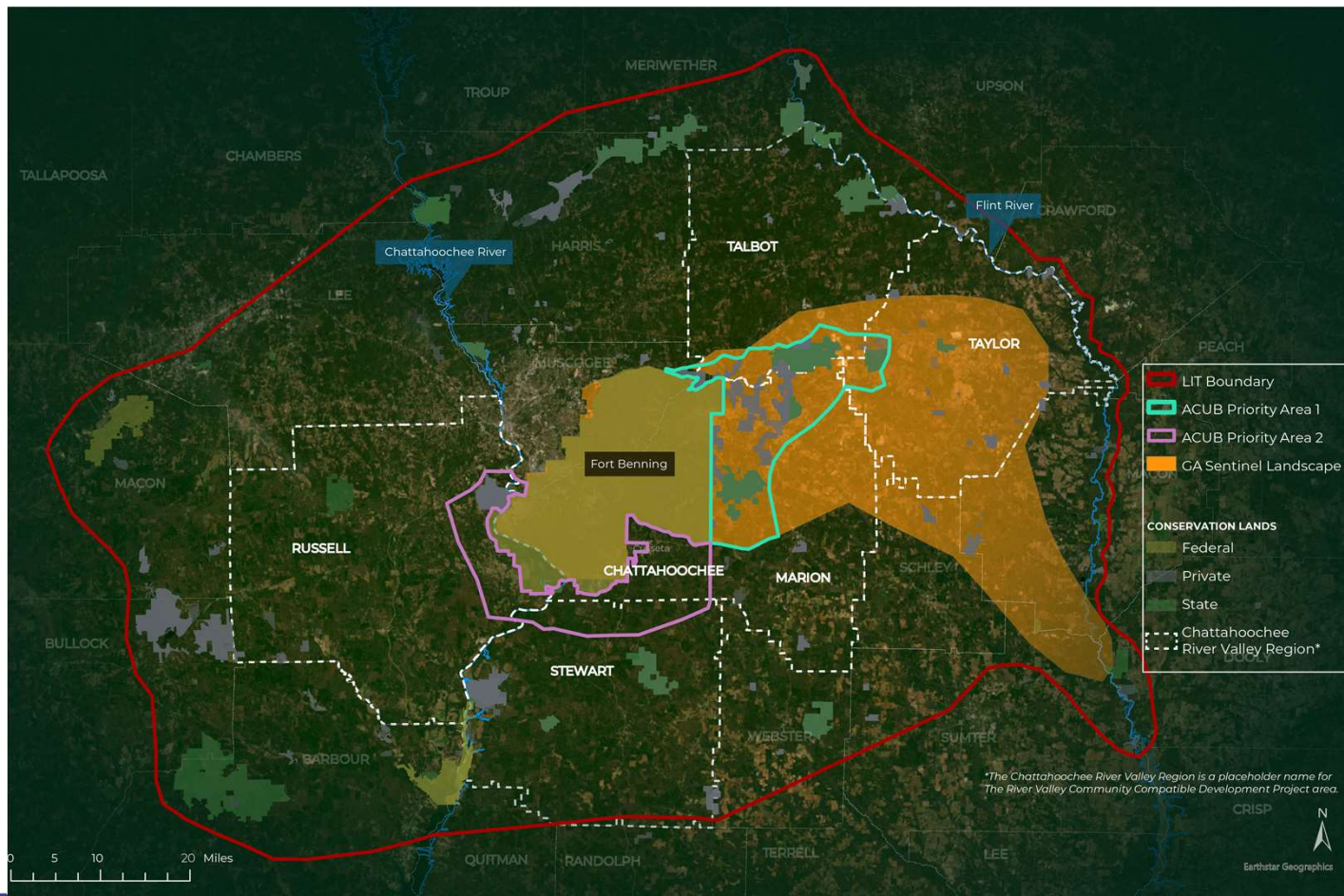
[in "Society of American Military Engineers"](https://www.linkedin.com/company/Society-of-American-Military-Engineers)



# FORT BENNING PROJECTS – Outside the Fenceline

DEFENSE COMMUNITY RESILIENCE PROGRAM

## COMPATIBLE DEVELOPMENT & CONSERVATION PLAN



**2023** JOINT ENGINEER TRAINING  
CONFERENCE & EXPO



samejetc.org

f @SAMENational

t @SAME\_National

#SAMEJTC23



"Society of American Military Engineers"

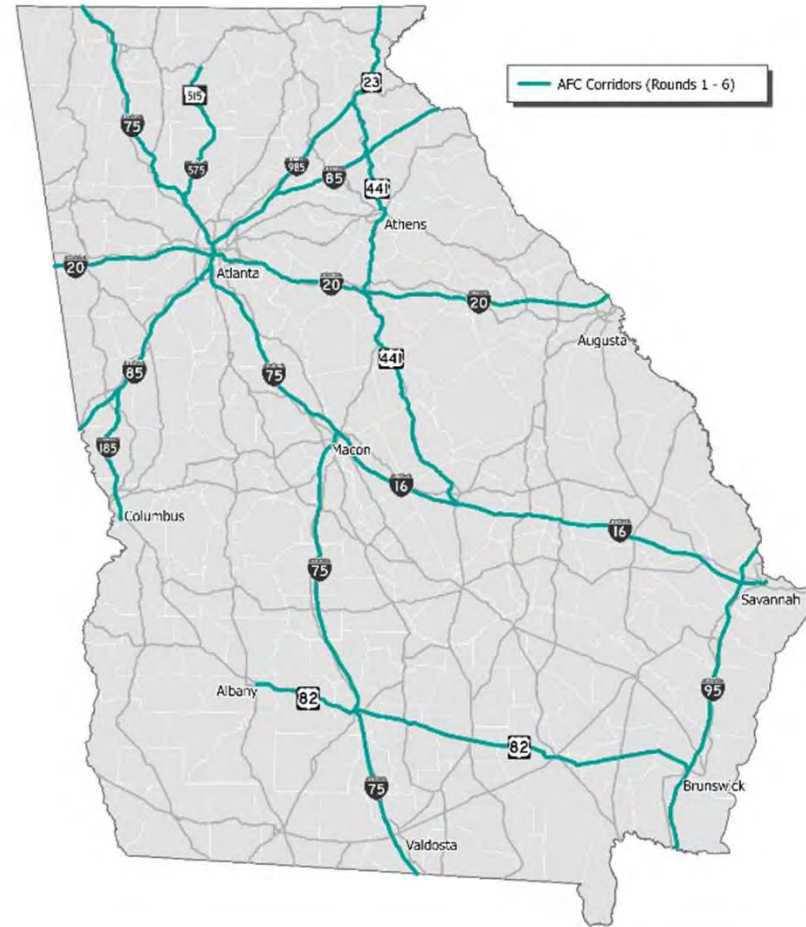


# FORT BENNING PROJECTS – Outside the Fenceline

DEFENSE COMMUNITY RESILIENCE PROGRAM

## Supporting the Military's Electric Vehicle Needs off-base

GDOT | GA EV  
Infrastructure  
Deployment Plan



**2023** JOINT ENGINEER TRAINING  
CONFERENCE & EXPO

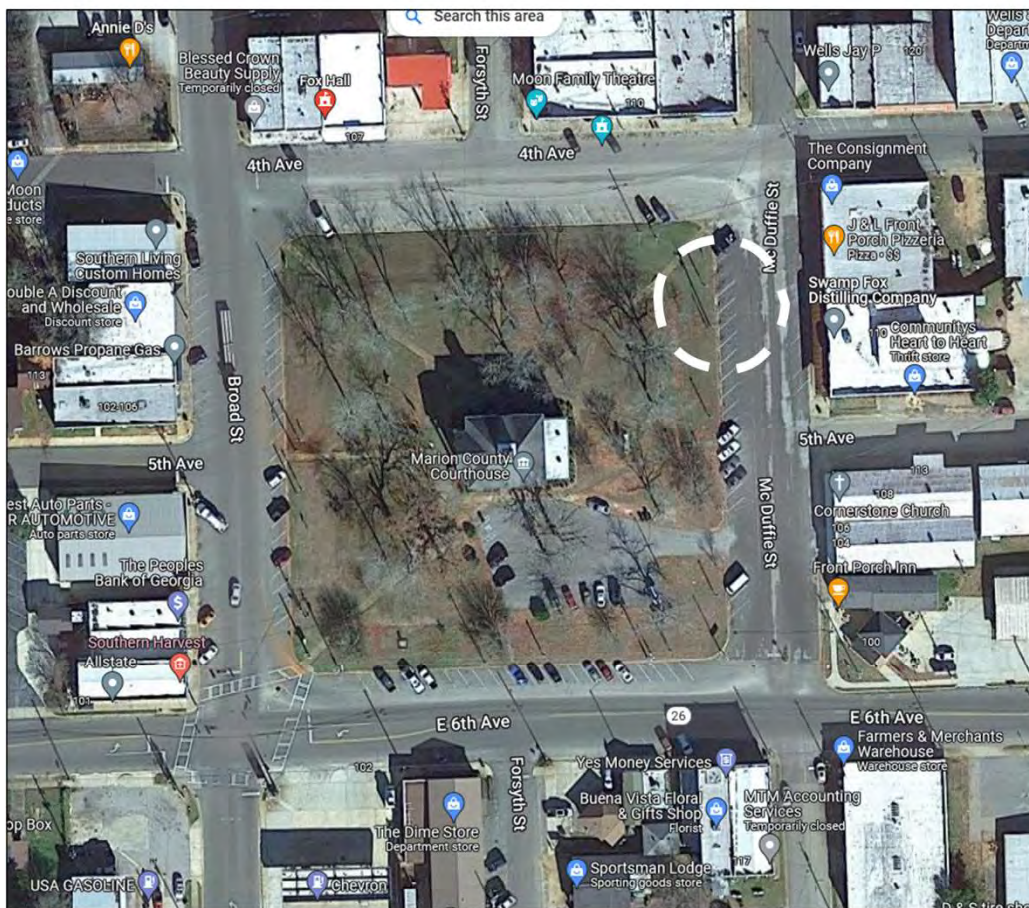


samejetc.org @SAMENational @SAME\_National | #SAMEJTC23 "Society of American Military Engineers"



# FORT BENNING PROJECTS – Outside the Fenceline

## DEFENSE COMMUNITY RESILIENCE PROGRAM



**2023** JOINT ENGINEER TRAINING CONFERENCE & EXPO



samejetc.org | [f @SAMENational](#) | [t @SAME\\_National](#) | [#SAMEJETC23](#) | [i "Society of American Military Engineers"](#)



# FORT BENNING PROJECTS – Outside the Fenceline

DEFENSE COMMUNITY RESILIENCE PROGRAM

PROPOSED

Buena Vista, GA



**2023** JOINT ENGINEER TRAINING  
CONFERENCE & EXPO



samejetc.org  @SAMENational  @SAME\_National | #SAMEJETC23  "Society of American Military Engineers"



# FORT BENNING PROJECTS – Outside the Fenceline

DEFENSE COMMUNITY RESILIENCE PROGRAM

## Phenix City Riverwalk

NI Solutions for  
erosion challenges.



**2023** JOINT ENGINEER TRAINING  
CONFERENCE & EXPO



[samejetc.org](http://samejetc.org)

[@SAMENational](https://www.facebook.com/SAMENational)

[@SAME\\_National](https://twitter.com/SAME_National)

[#SAMEJETC23](https://www.instagram.com/SAMEJETC23)

[in](https://www.linkedin.com/company/Society_of_American_Military_Engineers) "Society of American Military Engineers"





# Questions?

# 2023

JOINT  
ENGINEER  
TRAINING  
CONFERENCE  
& EXPO

MISSION  
SUCCESS  
STARTS  
HERE  
[SAMEJETC.ORG](http://SAMEJETC.ORG)

MAY  
2-4  
2023

San Antonio,  
TEXAS



[samejetc.org](http://samejetc.org) @SAMENational @SAME\_National | #SAMEJETC23 "Society of American Military Engineers"